



# FIREWARE

CREATING REALISTIC TRAINING ENVIRONMENTS

*Brochure 2021*



*At the cover: Fire Ware projects  
and products*

# Index

## Introduction

|  |    |
|--|----|
| Creating realistic training environments | 5  |
| Renting Training Equipment               | 7  |
| Design and Technical Guidance            | 9  |
| About FireWare                           | 11 |

## Product catalog:

|                                  |    |
|----------------------------------|----|
| Extinguisher Trainers            | 12 |
| Simulated Fire                   | 36 |
| Smoke                            | 46 |
| Training Extinguishers           | 62 |
| Scent                            | 72 |
| CBRNE                            | 76 |
| Sound                            | 84 |
| Packaging / Storage              | 90 |
| Demonstration Products           | 94 |
| Interactive Training Experiences | 98 |

## Projects:

|                                       |     |
|---------------------------------------|-----|
| Didactic Escape Rooms & Serious Games | 104 |
| Interactive Roadshows                 | 112 |
| Simulation & Staging                  | 120 |
| Worst Credible Flood Scenarios        | 122 |
| Multidisciplinary training in tunnels | 124 |
| Terrorism Scenarios                   | 126 |
| Large Scale Fires                     | 128 |
| Aviation                              | 130 |







# *Creating realistic training environments*

Realistic training environments are essential to help your emergency response team develop their professional skills. A realistic training environment will allow the trainee to better evaluate incidents and act accordingly. All first responders should benefit from this. However, creating realistic training environments is a specialised skill of its own.

We are specialised in creating realistic training scenarios and offer a wide range of training materials and easily applicable solutions to educate and train first responders. We provide full staging courses or tips and tricks for the use of existing materials to make the training even more realistic. We also collaborate with you to create customized training centres on your premises or even mobile training centres that you can take across the country to inform and educate your customers. FireWare has over 15 years of experience in the development of training solutions of all sorts. Our strength lies in the co-operation with our partners.

Together, we will evaluate your current training environment and materials. Within mutually set boundaries, we can mould it into a fully customised training facility that reflects your goals. Your contribution is highly appreciated and will add to the creation of scenarios that fit your company goals.

For organisations who occasionally need (additional) training equipment, we have created our rental department. Organisations can choose to rent training materials, or to rent both materials and specialist input from FireWare. Our simulation specialists are able to help you stage every conceivable scenario.

In emergency situations, all our senses are triggered. Therefore, we always aim to involve the stimulation of all senses in our training environments. Not to mention, the training materials must be easy to transport and easy to insert into the scenario. That's why our materials are delivered in convenient plastic cases.

### Creating temporary training facilities

FireWare also creates temporary training environments. These may vary from simple, basic scenarios to full-option scenarios that include a power supply, a computer-operated control system and even an actual classroom. For occasional training purposes, like the rescue of obese victims or an incident in a facility where the use of practice smoke is not allowed, it is also possible to rent the (additional) materials needed for the training. The sky is the limit in our wide range of rental scenarios and training equipment!

Some of the advantages of renting training equipment are:

- No acquisition costs
- No material depreciation, testing and maintenance costs
- The training materials are always up-to-date
- Logistics isn't an issue
- Trainees will learn to work with new equipment
- As opposed to acquisition, renting is a socially responsible choice
- No matter how large-scaled the training is, your material will never fail you
- Convenient budgeting

# *Renting Training Equipment*

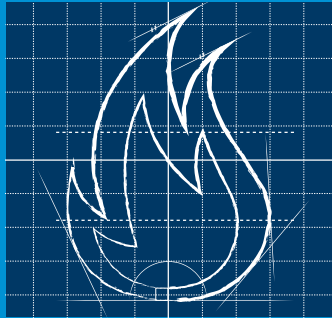
Our rental department offers customised solutions for any organisation in need of additional training materials like manikins, fire extinguisher trainers, sound systems or silk flames. We don't only rent out materials, but also the staging of complete scenarios. The full package can consist of preparation, logistics, materials, power supply, setting up and staging during the exercise. You name it, our highly enthusiastic team arranges it for you!

## **Renting materials**

Of course it is possible to keep the entire operation under your own control and just rent materials. All we need to know is your selection of training materials and the requested rental date. FireWare will ship the materials and deliver them at the requested location. However, you can even organise transport by yourself. Your job is to stage the scenario and to create special effects during the actual training. Clearly, FireWare will advise you in your choice of materials if needed.

## **Project rental**

In case of project rental FireWare guides you in picking the right materials and setting up the training scenario. According to your views, FireWare's simulation specialists can arrange the entire staging of your training or assist your own crew in creating a realistic training environment. The choice is yours!



## Advice about realistic training areas

Over the years, FireWare has gained a profound insight in various suppliers of training materials and training centres. Therefore, we can provide you with proper advice in your choice of product or installation, regardless the size of its area of use. Of course, we will take both your requirements and your budget into consideration when providing any advices.

FireWare can help you with:

- Establishing your training objectives
- The design of the room or training area
- The selection of the right special effects (scent, flames, smoke, sounds, etc.)
- The operation method
- The design
- Small adjustments, making your installation a multipurpose one
- Adding sustainability to your design

### Brainstorming session with no strings attached

Curious about FireWare's possible contribution to your project? Come and see us for a brainstorming session with no strings attached! Don't forget to make an appointment, in order to make sure that the person you need is at the office and has plenty of time for you and your project. Our brainstorming room in Wieringerwerf is professional, yet comfortable. A digital whiteboard, a large touchscreen, Wi-Fi and a whiteboard wall measuring over 15 m2 are all intended to allow you to illustrate your ideas. This is combined with the possibility if using the Lego Serious Play method for concept development, proper lighting and a hot or cold drink. A guaranteed formula for a successful project

## Seven phase strategic timeline

### **Phase 1: Free consultation session**

FireWare will assess your request and organise a brainstorming session with you to identify your wishes and requirements. During this session, the design will be discussed as well as (the level of) your contribution to the development and realisation of the project. To this end, we have installed a brainstorm room in Wieringerwerf, where the ins and outs of the project can be discussed in a relaxed manner.

### **Phase 2: Quotation**

Upon your decision to outsource the project to FireWare, you will receive a quotation. The quotation incorporates an overview of the design and advice costs. This phase also includes a preliminary delivery and time schedule.

### **Phase 3: Demands Program**

Upon acceptance of the quotation, we will establish a Demands Program in collaboration with you. This will answer the following questions:

- What does the project entail?
- Which are the specific requirements?
- Which requests are optional, and which are indispensable?
- What is the project's fixed budget?
- When are the project's deadlines?

### **Phase 4: Functional design**

Once the Demands Program has been approved, during this phase, the actual design will take shape. We will draft several concepts and subsequently discuss these with you. The concepts you approve, will then be turned into a final design. Depending on the delivery time and schedule, we will prepare drawings, material lists and colour lists.



## *Phase 5: Realisation quotations*

Once the design is completed, the realisation of the project will take shape. There are three options to choose from:

- You will proceed with the design that was the result of your collaboration with FireWare by yourself.
- FireWare takes the full responsibility of project realisation
- FireWare asks for quotations from third parties on your behalf. You decide the level of involvement of FireWare during this phase.

## *Phase 6: Realisation and/or project guidance*

In the event where FireWare was asked to take charge of the project's actual realisation, we will start building at this point. Of course, your organisation will receive regular updates regarding the project's progress. Once this phase ends, it is fair to assume you will have an outstanding training facility at your disposal

If you choose to have a third party carrying out the realisation of your project, we remain at your disposal for any required assistance. For example, we will help you sorting out the different quotations and we will monitor the project progress. We started the project together and we will finish it together.

## *Phase 7: Commissioning and maintenance plan*

We will teach instructors and other users how to use the facility following completion. This phase also includes a maintenance plan for your training facility in order to ensure the use of your new system for many years to come.

# *Design and Technical Guidance*

FireWare is all about creating realistic training environments. The means to this end is very diverse, with one common factor: they all are realistic, identifiable and interactive. Thus, the message our clients wish to spread will be better remembered, and we assist in realizing the ultimate training goal.

The products we sell and let out are at the very origin of it all. A realistic simulation will only be possible if the proper materials are employed. FireWare prefers working alongside you as a partner. Your current situation will be transformed into a perfectly customized training facility together with you. Your contribution in this process is as extensive as you wish. FireWare can help you with:

- Establishing the training objectives;
- Choosing the most effective means (mobile or fixed training centre, escape room, simulation, interactive road show, etc.);
- Choosing the right special effects (flames, smoke, sound, etc.);
- The method of control;
- The required look;
- Small adjustments which will make your installation suitable for multiple purposes.

## Society and sustainability

We would like to explain how FireWare practises the Corporate Social Responsibility theme. We don't mean to pat ourselves on the back. We merely aim to make the world somewhat of a better place, by making sustainable choices. Small things that make a difference, such as using green electricity and gas, offering fairtrade lunches, coffee & tea and installing LED light in our premises and products.

FireWare is particularly proud of having associated its name to the Foundation "Firefighters without Borders" as a gold partner for a period of five years. This foundation's aim is to collect used yet usable firefighters' equipment in the Netherlands to support countries where firefighters dispose of considerably fewer materials. The support is financial, educational and material. FireWare donates funds, firefighting materials and even training for instructors abroad.

Help FireWare supporting "Firefighters without Borders" by handing in your amortised training materials. We will check and store training materials that are still properly functional and make these available to the foundation who will use them for their various projects. Any material that is no longer safe and functional will be recycled. The proceeds of the recycled materials are fully donated to the "Firefighters without Borders" who can use the funds as they see fit.



## Mission



FireWare enables emergency response teams worldwide to train in the most realistic manner possible. Our theatre background allows us to stand out and address all senses at once. We aim to help first responders to become and remain competent.

## Vision



Our enthusiastic and creative team develops and supplies training material and educational solutions for the emergency response services industry. As our roots are in the world of theatre, we know how to stand out in a crowd. Our scenarios are as realistic as they can get!

We combine creativity with proven techniques and therefore come up with innovative realistic scenarios which make all the difference in the training experience. We do our outmost to inspire our customers, suppliers and own industry. Sustainability and reliability are all expressed in our designs.

We aim for long-term relationships with our customers and suppliers. We realise this through aiming for excellence in our products, processes and services. Particularly by always acting in an authentic and honest manner.

## Core Values



### Inspiring partnerships

FireWare inspires its customers and the industry with its creative concepts and creative

approach. Being open-minded allows us to be trendsetting. Inspiring collaboration for and with our customers results time and again in creative scenarios.



### Reliable

If we think something is not possible we will tell you. If we think it is better to refer you to another company then we will do that. We do as we promised and if we think it is not possible we will not promise it in the first place. That is what makes us reliable.



### Creative

We offer creative solutions to problems and challenges. We build new products and scenarios, whether or not from scratch. We know how to turn functional requirements into practical, aesthetically, responsible designs. And we know how to do this without losing track of the users' interests.



### Sustainable

We realise we were given this planet on loan and we need to treat it with care. Therefore, we place a high priority on sustainability & the environment. We partake in keeping the planet safe by focusing on small contributions, like separating waste, but we certainly also aim to design our solutions as environmentally healthy as possible.



### Authentic

We remain true to ourselves. Our technical theatre and creative background are evident in all our products and services. Humour, with an occasional hint of irony forms part of FireWare's culture. But above all, we have the utmost respect for our customers, suppliers, employees and other stakeholders. We will always aim for the best achievable result and long-term relationships.



### **Excellent**

We strive for excellence in our products, our processes and our service. We do, of course, realise that continuous improvements are the key to success. We achieve this by nurturing a culture which allows scope for constructive criticism and whereby we are open to each other's new ideas.

## *Philosophy*



So how do you go about creating a realistic training environment? What's needed? FireWare can offer a tried and tested method for this. FireWare bases realistic staging on 5 pillars:



***The senses***



***Control of the senses***



***Learning, lesson and training objectives***



***The scenario***



***The Decor***

You can find an extensive version of our philosophy at <https://www.FireWare.nl/en/philosophy/>

## *About FireWare*

FireWare is founded by Sef Hendrickx and Jacqueline van Zanen on 28th July 2003. Sef was studying theatre technology at the time. For his study he attended an emergency response training session with a crackle box. He wondered why some of the special effects from the theatre and film industry weren't being used for training the emergency response teams. This question became the subject of his thesis research, which subsequently resulted in the idea for founding FireWare.

The effects and techniques from the theatre world, after a few minor adjustments, appeared to be very effective in the training environment for emergency response teams. The research results even showed there was a significant improvement in learning results.

Nowadays FireWare is a company that creates realistic training environments and training equipment.







## *Extinguisher Trainers*

FireWare offers various solutions for staging fires with actual flames. Our extinguisher trainers allow to create a controlled solid substance fire, liquid fire or even to set a "person" on fire. User friendliness and reliability are of great importance.





Plastic box 60 x 40 x 44 cm included



Cutout handles



Industrial remote



Gas hose with regulator valve and flame trap





Connection extra gas outlet



Horizontal stand

## Specifications

|                    |                     |
|--------------------|---------------------|
| Article number:    | 049-012-001         |
| Power consumption: | 12 V Battery        |
| Dimensions:        | 55 x 34,9 x 27,1 cm |
| Weight:            | 21.36 kg            |
| Material:          | Stainless Steel     |

Plastic box 60 x 40 x 44 cm  
included

## Accessories

|             |                             |
|-------------|-----------------------------|
| 049-012-035 | Vesta Horizontal Stand      |
| 049-012-002 | Add-on Flange Fire          |
| 049-012-005 | Add-on Electric Motor       |
| 049-012-006 | Add-on Garbage Bin          |
| 049-012-007 | Add-on Stove                |
| 049-012-008 | Add-on Wheeled Bin          |
| 049-012-017 | Add-on Wash Dry Combination |
| 049-012-018 | Add-on Desk                 |
| 049-012-028 | Add-on Server Cabinet       |
| 049-012-032 | Add-on Fryer                |
| 049-012-042 | Add-on Computer             |



## Vesta

The FireWare Vesta is small and compact, yet it generates a huge flame. The size of the flame is adjustable. The extinguisher trainer weighs 19 kilos and that makes it easy to carry. Ideal when you need to set up a training by yourself!

To make the Vesta compatible for any situation, FireWare developed additional top-pieces, the Vesta add-ons. Some add-ons can work on their own gas supply. The Vesta has a special exit and a separate button on the remote to activate the top-pieces.

Thanks to FireWare's experience with many extinguisher trainers, the Vesta is supplied with clever tricks. The Vesta is light-weighted and small, its industrial remote control is clear and the cut-out handles makes the fire extinguisher easy to carry. The Vesta is built from separate modules and comes in a plastic case for transportation.

## Specifications

Article number: 049-012-005  
Material: Stainless Steel  
Dimensions: 56 x 36 x 67cm  
Weight: 15.5 kg

Plastic box 60 x 40 x 44 cm included



The Garbage Bin with the open lid



The Garbage Bin with the open lid on fire



## Add-on Garbage Bin

The Add-on Garbage Bin is an addition to the FireWare Vesta. This bin can easily be positioned on top of the extinguisher trainer. An interchangeable lid allows to practice different extinguishing techniques with an open and closed bin.

Its clever design allows simple packaging and transportation in the plastic box supplied. The box measures a convenient 60 x 40 x 44 cm. The Add-on Garbage Bin is made of top-quality stainless steel.



The Vesta can be placed in the back

## Specifications

Article number: 049-012-008  
Material: Steel

## Add-on Wheeled Bin

The Add-on Wheeled Bin is designed to place a FireWare Vesta extinguisher trainer inside it. This combination stages a realistic fire in a dumpster. The large 240L wheelie bin is easy to transport.



## Specifications

Article number: 049-012-006  
Material: Stainless Steel  
Dimensions: 56 x 36 x 40 cm  
Weight: 20 kg

Plastic box 60 x 40 x 44 cm included 038-091-036



Add-on Electric Motor



Add-on Electric Motor in Use

## Add-on Electric Motor

This electric motor can easily be positioned on top of the Vesta extinguisher trainer, offering challenging situations in extinguishing fire!

Its clever design allows simple packaging and transportation in the plastic box supplied. The box measures a convenient 60 x 40 x 44 cm. The Add-on Electric Motor is made of top-quality stainless steel







Add-on Explosion Cage



Plastic box 60 x 40 x 44 cm included

## Specifications

|                                      |                 |
|--------------------------------------|-----------------|
| Article number:                      | 049-012-038     |
| Material:                            | Stainless Steel |
| Plastic box 60 x 40 x 44 cm included | 038-091-036     |



## Add-on Explosion Cage

The Add-on Explosion Cage is an addition for the FireWare Vesta. The Explosion Cage is easily attached to the extinguisher trainer. Use it to show your students how a small aerosol reacts to a fire. Warn your students that there will be a burst of flame! A loud explosion follows the ignition of the Vesta within seconds. The prompt explosion demonstrates the risks of the spray cans to the students. Such a small aerosol can have a big impact.

The Add-on Explosion Cage is designed for 75ml-aerosol explosions at the most. For example a small can of hairspray or deodorant. The add-on is delivered in a convenient plastic transport box (60 x 40 x 44cm).

## Specifications

Article number: 049-027-006  
Dimensions: 21 x 21 x 48 cm  
Weight: 8 kg  
Material: Stainless Steel  
  
Plastic box 60 x 40 x 44 cm included 038-091-013



Attached to Vesta



Realistic flames

## Add-on Gas Cylinder

The Add-on Gas Cylinder is an addition to the FireWare Vesta. You can connect the stainless steel cylinder to your FireWare Vesta with the included gas hose. Aim the outflow of the gas cylinder towards the Vesta and control the flames with the Vesta remote.

The student can extinguish the Add-on Gas Cylinder by cooling the cylinder with a jet of water and closing the gas tap. The instructor will put out the flames using the Vesta remote.





Input through gas hose and original gas bottle



Realistic Flames

## Specifications

Article number: 049-027-005  
 Dimensions: 50 x 51,5 x 38,5 cm  
 Weight: 19 kg  
 Material: Stainless Steel

Plastic box 60 x 40 x 44 cm included

## Accessories

049-092-003 Ignition Burner Large

# Stand-alone Gas Cylinder

The Gas Cylinder Stand-alone is a fully stand-alone extinguisher trainer. Connect a real gas cylinder to the stainless-steel Gas Cylinder Stand-alone for the gas supply. Then manually ignite the Gas Cylinder Stand-alone. The flames can be regulated by adjusting the gas supply from the real gas cylinder.

The student can extinguish the Gas Cylinder Stand-alone by cooling the cylinder with a jet of water and closing the gas tap on the add-on Cylinder.

Gas Cylinder Stand-alone comes in a plastic box. Its clever design allows simple packaging and transportation in the plastic box supplied. The box measures a convenient 60 x 40 x 33 cm.



## Specifications

Article number: 049-012-002  
Material: Stainless Steel  
Dimensions: 56 x 36 x 40cm  
Weight: 8,5 kg

Plastic box 60 x 40 x 44 cm 038-091-036  
included



The Add-on Flange Fire in Operation



Plastic box 60\*40\*44 cm Included

## Add-on Flange Fire

The Add-on Flange Fire is an addition to the FireWare Vesta. The Flange Fire is an active add-on. This means you can connect it to the Vesta's additional gas outlet and ignite it via the Vesta by directing the gas outflow towards the burning Vesta. The Add-on Flange Fire can be placed on top of or besides the Vesta.

The Add-on Flange Fire allows varying hazmat trainings. Let the student close the gas tap and release the squeeze handle yourself. This shuts down the gas supply.

Its clever design allows simple packaging and transportation in the plastic box supplied. The box measures a convenient 60 x 40 x 44 cm. The item is made of top quality stainless steel. Also available as a Stand-Alone Version.





Gas Hose



Stand-Alone Flange Fire in Operation

## Specifications

|                                      |                 |
|--------------------------------------|-----------------|
| Article number:                      | 049-012-013     |
| Material:                            | Stainless Steel |
| Dimensions:                          | 56 x 36 x 40cm  |
| Weight:                              | 8,5 kg          |
| Plastic box 60 x 40 x 44 cm included | 038-091-036     |
| Gas Hose Set Included                | 049-092-011     |



## Stand-alone Flange Fire

The Stand-alone Flange Fire is manually ignited with a separate ignition burner (not included). The gas hose is equipped with a squeeze handle to open and cut off the gas supply.

The Stand-alone Flange Fire is perfect to train incidents with hazardous materials. Let the student close the gas tap and release the squeeze handle yourself. Thereby the gas supply immediately cuts off, and the flames are extinct!

Its clever design allows simple packaging and transportation in the plastic box supplied. The box measures a convenient 60 x 40 x 44 cm. The Stand-alone Flange Fire is made of top-quality stainless steel. Also available as an Add-on for the Vesta.



## Specifications

Article number: 049-012-042  
Dimensions: 56 x 36 x 60cm  
Weight: 7,5 kg

Plastic box 60 x 40 x 32,5 cm 038-091-013  
included



Add-on Computer side view



Add-on Computer on fire

## Add-on Computer

The Add-on Computer is an addition to the FireWare Vesta. This device can be easily positioned on top of the extinguisher trainer and offers possibilities for challenging office scenarios!

Its clever design allows simple packaging and transportation in the plastic box supplied. The box measures a convenient 60 x 40 x 32.5 cm. Produced using top quality stainless steel.





Burning cable tray



Burning Desktop

## Specifications

|                 |                  |
|-----------------|------------------|
| Article number: | 049-012-018      |
| Material:       | Stainless Steel  |
| Dimensions:     | 120 x 75 x 130cm |



## Add-on Desk

The Add-on Desk can be used to stage a real-life office fire. Allow the fire to simply travel across the cable tray by using the Vesta's extra gas outlet. The Vesta can be fully hidden inside the drawer unit. This enhances the realistic level of the training.

## Specifications

Article number: 049-012-017  
Material: Stainless Steel  
Dimensions: 120 x 75 x 89cm



## Add-on Washer and Dryer

The Add-on Washer and Dryer can be used to stage a real-life fire in a laundry room. The Vesta can be fully inserted inside the dryer unit. This enhances the realistic level of the training.





Add-on Server Cabinet detail



The Add-on Server on fire

## Specifications

|                 |                  |
|-----------------|------------------|
| Article number: | 049-012-029      |
| Material:       | Stainless Steel  |
| Dimensions:     | 70 x 116 x 175cm |

## Add-on Server Cabinet

This Add-on for the FireWare Vesta will allow you to simulate fires in server and patch cabinets. This server cabinet is man-sized and has 4 doors; 2 at the front and 2 at the rear. The built-in flame diffuser allows for a flame direction to be chosen.

The setting clearly shows the fire is "inside" the cabinet. If this Add-on is strategically positioned in the room, you will be able to create scenarios where the student can choose to move beyond the fire, or to attack it from the front. In short: a contemporary scenario!



## Specifications

|                                     |                 |  |
|-------------------------------------|-----------------|--|
| Article number:                     | 049-012-031     | Add-on Fryer                           |
| Material:                           | Stainless Steel | Lid                                    |
| Dimensions:                         | 56 x 36 x 32cm  | Bracket for simulating a frying basket |
|                                     |                 | Tray for fat                           |
| Plastic box 60 x 40 x 32,5 included | 038-091-036     | Bracket with a tray for water          |
|                                     |                 | Drop chain                             |



Add-on Fryer parts



Plastic box 60 x 40 x 32,5 cm included

## Add-on Fryer

This Add-on will allow you to use your FireWare Vesta for simulating various kitchen incidents. What would you say to using a lid on a burning frying pan? But you can also safely show the effects of what will happen if you still attempt to extinguish a grease fire with water.

The Add-on Fryer is a mock-up of a frying pan which can be positioned on top of the FireWare Vesta. The Add-on Frying pan is made of top-quality stainless steel. It is supplied in a plastic box for storage and transport.

The FireWare Vesta's flames pass through the bottom of the frying pan, allowing for the safe simulation of a flame in the frying pan. The accompanying lid can be used to practice the extinguishing procedures. A tray for real cooking oil is also supplied.

The instructor can also remotely add a certain amount of water to the cooking oil fire for demonstration purposes. This will be done with a chain and drop mechanism. A large fire ball will be the direct result and instantly provide the students with the insight that water isn't always the best extinguishing agent, when it happens to concern a grease fire.







The Add-on Stove with bottom flames



Flames from the hood

## Specifications

|                 |                 |
|-----------------|-----------------|
| Article number: | 049-012-007     |
| Material:       | Stainless Steel |
| Dimensions:     | 60 x 60 x 210cm |



## Add-on Stove

The Add-on Stove stages a real-life kitchen fire. Use the additional gas outlet of the Vesta to allow the fire to simply transfer from the stove to the extractor hood. The training will become even more challenging and dynamic.

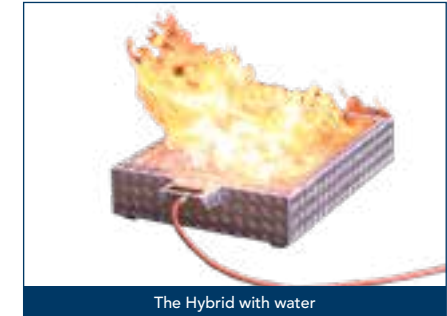
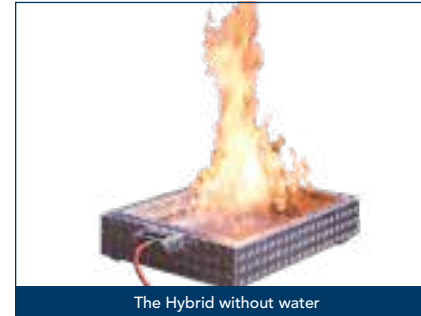
The Vesta can be fully hidden inside the oven. This enhances the realistic level of the training.

## Specifications

Article number: 049-092-001  
Dimensions: 80 x 60 x 15 cm  
Weight: 16,5 kg  
Gas hose set included 049-092-011

## Accessories

049-092-003 Ignition Burner Large  
049-092-006 Gas Container Large  
049-092-005 BF Windscreen



# Hybrid extinguisher trainer

Use the Hybrid to simulate a fire for practicing several techniques of extinguishing. One of the Hybrid's unique features is the possibility to use it both with and without water. Create a wide and dynamic flame image on a water layer or use the unique perforated stainless-steel bottom plate to create a totally different, but complete image.

Students can extinguish the fire using CO<sub>2</sub>, foam or water. The flames will vanish when the instructor stops the gas flow with the handle on the gas hose. Any residual foam can be easily drained through the holes in the sides of the extinguisher trainer. The Hybrid is suitable for different gas types, like propane, LPG, and butane, as long as it goes into the extinguisher trainer in the form of gas.

The construction is made of strong aluminium sides and the casing is made completely out of tread plate. Despite the use of these strong materials, it only weighs 1 kilos. The Hybrid can be easily set up by one person and is operational within minutes. Simply connect the gas hose, squeeze the handle and ignite the extinguisher trainer with the ignition burner large (not included). As long as the instructor squeezes the handle, the fire will keep on burning.





Solid in use



Use logs for extra effect

## Specifications

|                       |                 |
|-----------------------|-----------------|
| Article number:       | 049-092-012     |
| Dimensions:           | 30 x 30 x 45 cm |
| Weight:               | 15 kg           |
| Gas hose set included | 049-092-011     |

## Accessories

|             |                                |
|-------------|--------------------------------|
| 049-092-003 | Ignition Burner Large          |
| 049-092-006 | Gas Container Large            |
| 049-092-016 | Fake Woodenlogs for Solid Fire |

# Solid extinguisher trainer

The Solid is a fully stand-alone extinguisher trainer. It allows you to swiftly simulate a solid material fire in no time. A gas pressure of only 1 bar suffices to start a fire. Complete the staging by throwing some real or fake logs on the fire.

The Solid is easy to use. Just connect the gas hose, squeeze the handle and ignite the extinguisher trainer with the ignition burner large (not included). The flames stop when the instructor terminates the gas supply with the handle on the gas hose.



## Specifications

|                       |             |
|-----------------------|-------------|
| Windscreen            | 049-092-005 |
| Gas Hose Set          | 049-092-011 |
| Ignition Burner Large | 049-092-003 |
| Gas Container Large   | 049-092-006 |



Gas Hose Set



Windscreen

## Accessories

### Windscreen

The Windscreen is especially developed for the Hybrid to allow it to be used under any weather condition. The standing shields protect the flames from strong winds, providing students with a controlled and safe fire to put out.

### Gas Hose Set

The Gas Hose Set can be easily attached to the extinguisher trainers. There is a gas pressure regulator allowing you to regulate and read the gas pressure. The squeezing handle allows the gas to flow through the hose. The more the handle is squeezed, the more gas flows through the hose and the higher the flames will be. As soon as the handle is released, the fire will go out.

It is possible to install a pilot burner on the handle using the setscrew. This allows a continuous, but limited gas flow to the extinguisher trainer preventing the need to re-ignite after each release of the handle. The pressure regulator is equipped with a flame extinguisher. The gas supply will be automatically cut off in case of unexpected gas pressure issues.

### Ignition Burner Large

This torch burner is fitted with a stretched lance and helps ignite the extinguisher trainers in a safe manner. One gas bottle is included. Extra gas bottles can be ordered optionally. The gas bottle contains a mixture of butane and propane. The content is 600 ml.



Ignition Burner Large



Gas Container Large



Silver Fire Manikin on fire



## Specifications

|                           |                   |
|---------------------------|-------------------|
| Article number:           | 017-062-001       |
| Size:                     | 1.80 meter        |
| Material:                 | Kevlar & Silicone |
| Silver Fire Vest Included | 017-062-002       |

## Accessories

|             |                         |
|-------------|-------------------------|
| 017-062-002 | Silver Fire Vest        |
| 017-062-005 | Manikin Standard 2.0    |
| 029-030-002 | Low Smoke Flammable Gel |
| 049-092-003 | Ignition Burner Large   |
| 049-092-006 | Gas Container Large     |

# Silver Fire Manikin

The Silver Fire Manikin simulates a burning person. This allows students to learn how to put out flames with a fire blanket. The techniques for extinguishing a standing person can be practiced by using its standard. The Silver Manikin will stand up straight in this standard.

The Silver Fire Manikin is manufactured from silicone cloth and strengthened with Kevlar at the crotch, the armpits and the ends of the arms and legs. One Silver Vest for the upper body is included. It is advisable to ignite the fire on this vest because it will considerably extend the life span of the manikin. The vest is easy to replace and has a higher heat resistance than the manikin but is not water repellent.

The best way to inflame the manikin is with the FireWare Low Smoke Flammable Gel. The manikin weighs approximately 10 kilograms, as a result it is easy to carry and post on location. The Silver Fire Manikin is not suitable to be used as a drag dummy.



## Specifications

Article number: 017-062-005

Supports manikins up to  
15 kg

## Accessories

049-092-003

049-092-006

Ignition Burner Large

Gas Container Large

# Manikin Standard

This Manikin Standard is intended to keep a fire manikin in an upright position during an exercise. This way the manikin simulates a standing, burning person. The students can practice the use of the fire blanket on a standing person. The standard is levelled at the back, as a result of which the burning dummy can easily be laid down.

The standard also offers easy storing of your manikin. For transportation purposes the standard can be taken apart in 2 parts. The items will be supplied as a construction kit.





Low Smoke Flammable Gel used on Silver Fire Manikin



4x 1L Low Smoke Flammable Gel

## Specifications

|                 |             |
|-----------------|-------------|
| Article number: | 029-030-002 |
| Weight:         | 4.3kg       |
| Volume:         | 4 x 1L      |



## Low Smoke Flammable Gel

Why not stage a very realistic fire in a cooking pan to see whether your students can properly put the studied theory into practice? With Low Smoke Flammable Gel, you can create fire in a quick and safe way. This gel's special feature is the possibility to use it indoors as the flammable gel hardly produces any smoke. There is hardly any black soot left after the incineration.

The fire from this gel becomes less hot than smoking pastes. So it is particularly fit for use on a fire manikin. The reduced temperature extends the life span of the fire manikin. The gel is suitable for every non-flammable surface, such as the bonnet of a scrap car.

The flammable gel's structure can be compared with hair gel and can therefore also be smeared on vertical or sloping surfaces. For example, on a extractor hood in case of a fire in a kitchen.





## *Simulated fire*

Using actual fire and flames doesn't fit all scenarios. FireWare offers various flame simulation possibilities. These aids help create the illusion of fire in a safe environment.

Simulated fire makes it possible to practice anywhere you want, without causing any damage. Even in homes or offices, and even while people are inside. There's all manner of things as to the scenario's. With use of light effects, you are able to stage an impressive fire glow and simulated short-circuit. Or create the illusion of fire with a silk flame.

## Specifications

Article number: 011-012-001  
Power consumption: 230 V  
Dimensions: 25 x 19 x 17 cm  
Weight: 3,05 kg  
Operation: On Device

## Accessories

057-006-094 Spare Bulb Red 12 V - 20 W  
013-004-001 Spare Silk Cloth  
038-091-008 Plastic box 40 x 30 x 23.5 cm  
047-061-001 Plug On-Off Remote



Fire in a copier



Metal housing

# Mini Silkflame

A silk flame imitates a seat of fire with the combination of a silk cloth, lights and a ventilator. A realistic flame is created in no time. It is a matter of connecting the plug to the power point and pressing the start button.

The flame of this FireWare Mini Silkflame is 30 centimetres high. This flame is very suitable for exercises for emergency response officers. For example, place the Mini Silkflame in a wastepaper basket or cupboard. This fire simulator is perfectly suitable for creating a surprise effect or for post reconnaissance in firefighter training.







Build in plastic box

## Specifications

Article number: 011-012-005  
 Power Consumption: 230 V / 450 WATT  
 Dimensions: 60 x 40 x 33 cm  
 Weight: 21 kg

Plastic box 60 x 40 x 32,5 cm  
 included

## Accessories

013-014-027 Spare Cloth  
 047-061-001 Plug on / off Remote Control



# Phoenix Silkflame

The Phoenix Silkflame has been especially developed for use during firefighting exercises. The powerful ventilator is suitable for use in combination with high concentrations of training smoke. This silk flame is suitable for both vertical and horizontal use. Ideal for simulating more complex fires.

The flame cloth's rolling system is unique. The height of the flame is therefore adjustable between 0 and 200 cm. The LED lighting is easy to tilt, allowing for the most optimal result to be achieved with any flame height. All the metalwork consists of top quality stainless steel. The entire silk flame is built into a Euro norm case as standard. This results in high-level convenience for storage and transport purposes. Open the lid and start staging!

## Specifications

Article number: 025-028-005  
Power consumption: 240 V  
Dimensions: 58 x 74 x 107 cm  
Weight: 22 kg  
Operation: Remote Control

## Accessories

057-006-094 Spare Bulb Red 12 V - 20 W  
057-006-017 Spare Bulb Blue 12 V - 20 W  
013-004-001 Spare Silk Cloth  
009-030-002 FireWare Medium Smoke Fluid



Control all effects with your own smart device



Stage a fire extinguishing training

# Burning Wheelie Bin

The Burning Wheelie Bin ensures a complete simulation of a trash can fire. Create a scenario with flames, smoke and sound with a single touch on your own smartphone or tablet. All the simulation effects are built in the wheelie bin.

A smoke machine, speakers and a silkflame have been concealed in the Burning Wheelie Bin. In addition, the brain of the new Pandoras Box has been included in this updated edition. This allows the instructor to control all effects for the simulation with his or her own smart device. The Pandora itself hosts a wireless Wi-Fi network for the instructor to log on to by scanning a QR code or manually entering a code. No need for complex software.

Of course, fire sound effects are being included in the Burning Wheelie Bin. But, you can also add the sound of sparks, an explosion or a crying baby to the training. Just to name a few. Therewith you can create an amazing surprise effect for every student! Via your smartphone you can play all sounds at the same time and even create a mix.

A platform is assembled inside the container. The instructor can place papers or other waste on this platform. That way you will make the training lifelike! Additionally, the simulation unit is mobile. That is why it is easy to transport and can be used in many locations. For example, use the wheelie bin for a fire drill in a residential area or warehouse.

The Burning Wheelie Bin is available in blue, green, red and black.





FireWare Firespot



FireWare Firespot in Operation

## Specifications

|                    |                              |
|--------------------|------------------------------|
| Article number:    | 027-090-003                  |
| Mains Connection:  | 180 ~ 264 V AC               |
| Power consumption: | max. 10 Watt                 |
| Weight:            | 1,4 kg                       |
| Dimensions:        | 78 x 78 x 175 mm             |
| Cable Length:      | 2 m                          |
| LED:               | 4 x LED (2x Orange / 2x Rot) |
| Waterproofness:    | IP67                         |

## FireWare Firespot

With the FireWare FireSpot it takes no effort to create realistic flame effects. The FireSpot has been especially designed for this purpose. The 10-Watt luminaire contains 4 LED light sources; 2 red ones and 2 orange ones. These LEDs are equipped with special lenses, resulting in a broad-based red glow with an orange core. Try it and discover the ideal configuration for simulating horizontal and vertical flame effects!

The FireSpot is made of waterproof IP67. It is provided with a 2-metre cord. Its housing is made of top quality anodised aluminium. The FireSpot also perfectly fits flame simulation purposes in wheel housings, above system ceilings and other compact areas given its compact size of 78 x 78 x 175mm.



## Specifications

Article numbers: 025-012-036  
Dimensions: 40 x 30 x 23.5 cm  
Controlling: Wireless remote control  
(included)

## Accessories

003-012-001 Cirrus  
001-012-001 Nimbo  
002-012-001 Cumulus  
002-012-002 Stratus



# FireWare Pandora's box

Quickly and easily set up a complete exercise whereby many senses are stimulated? The Pandora makes this happen! The Pandora creates a realistic flame effect, sound effects and the control of a smoke machine. It works on a battery and can be wirelessly operated with your own smart device.

### LIGHT EFFECTS

Two powerful LED flame luminaires – a red one and an orange one - are mounted on the Pandora. Each luminaire can be set separately to the machine by the way it flashes. There are more than 256 simulation possibilities. By hiding the Pandora and installing a smoke machine, a realistic flame image is created. The flame simulation also gives a realistic fire sound when it is started up.

### SOUND

Sound is extremely important during an exercise. The Pandora gives this sense the attention it deserves. In addition to the big or small fire sound, you can also play the sound of sparks, a liquid leak, an explosion, a collapse, a diesel engine, a gunshot and a gas leak. But also the slow woop, a barking dog, a victim's sobbing, a crying baby and cry for help are in the box. And you don't have to choose: the Pandora can also play all sounds at the same time, or create a mix. For example, start the exercise with the effect of a small fire. Then play the audio of the big flame over it and simulate the penetration of the fire!





Control all effects with your own smart device



### **SMOKE**

The Pandora has a connection option for various smoking machines, including the Cirrus, Cumulus, Stratus and Nimbo. The box of the Pandora even has a storage compartment for a Cirrus battery smoke machine, which is ideal to do exercises in areas where there is no power supply or where the power supply is disconnected during the exercise. Think of exercises on ships, in cells or in buildings designated for demolition.

### **REMOTE CONTROL**

There is nothing more annoying than an instructor who walks to the incident during the exercise to turn machines on or off. All functions of the Pandora can therefore be controlled wirelessly and remotely with your own smartphone or tablet. The Pandora itself brings a wireless WiFi network into the air. Instructors log in by scanning a QR code or manually entering a code. So no complicated software is needed. It is even possible to log in with multiple devices at the same time. Then multiple instructors can manage the functions together from various positions! The possibilities for dynamic staging are great.

### **BATTERY**

The interactive and smart on/off switch indicates exactly when the Pandora is ready for exercise. The instructor will then receive feedback by means of a sound signal. With the powerful battery you can then count on hours of practice fun. With a full battery you can stage the whole day.

### **ROBUST**

The Pandora is made of high quality stainless steel in a standard euronorm crate of 40 x 30 x 23.5 cm. This ensures that the machine is well protected during storage, transport and operation. The electronics are fully encased to prevent (moisture) interference. All connectors, knobs and other components are of high industrial quality. That is why the Pandora has a warranty of no less than 2 years!

## Specifications

Article number: 040-030-012  
 Dimensions: 60 x 40 x 32,5 cm  
 Weight: 17,50 kg

Contains:  
 Plastic box (60 x 40 x 32.5 cm)

Mini-Silkflame: 011-012-001  
 FireWare Fusion: 025-012-012

## Set consists of

Nimbo 001-012-001  
 Nimbo Wireless Remote 008-012-013  
 FireWare FireSpot 027-090-003  
 Burning Smell Spray 031-030-003  
 Click on/off Wireless remote 047-061-001  
 Distribution block 047-006-061

Languages: NL, EN, FR, DE, ES, IT



Plastic box 60 x 40 x 32.5 cm with foaminterior included



Plastic box 60 x 40 x 32.5 cm

# Training Set Seat of Fire

All you need to quickly stage a small fire is packed in one box; The Training Set Seat of Fire. It contains a FireWare Mini Silkflame, a FireSpot and a FireWare Nimbo smoke generator, a FireWare Fusion soundbox, a FireWare Burning Smell Spray, a Schuko distribution block and a click on/off remote control.

These products together can simulate a fire that is indistinguishable from a real fire. The Mini Silkflame, the Fireware FireSpot and the Nimbo smoke generator will make it visually look like there is a fire. The Fusion will produce the sound of a fire and the FireWare Burning Smell spray gives you the scent of a fire. The eyes, ears and nose will be triggered into believing it is a real fire. This set is completed with a practical Schuko distribution block.

In order to operate the Mini Silkflame and the fire blaze spot, the box also contains a click on/off remote control and a wireless remote for the smoke machine. The box itself is made of synthetic material, has a foam interior, tailor-made to fit the items inside and comes with a lid. Inside the box, there is even some space left to keep safe personal belongings!







Control fire effects and a smoke experience on remote



Conduct a small simulated fire extinguishing exercise

## Specifications

Article number:

- with Apollo LED CO2 Training Fire Extinguisher 040-030-020
- with Apollo LED Push Button 040-030-021
- with Apollo LED Squeeze Handle 040-030-022

## Set consists of

- |                           |             |
|---------------------------|-------------|
| FireWare Cirrus           | 003-012-001 |
| Pandora's Box             | 025-012-011 |
| Apollo LED CO2            | 025-100-013 |
| Apollo LED Squeeze Handle | 025-100-014 |
| Apollo LED Push Button    | 025-100-015 |

# Fire Extinguishing Simulation Kit

Quickly and easily set up a complete exercise to teach students proper techniques for extinguishing fires? Combine Pandora's Box with the Cirrus Battery Operated smoke machine for a realistic fire simulation, the sounds effects and the smoke experience of an incipient fire. Then challenge students to take adequate action and assess their fire extinguishing skills. The training materials from the set are battery operated and immediately operational. The instructor stages the exercise in an instant!

Working with this set keeps the practice environment clean, training can be practiced almost anywhere. Moreover, the next student can quickly take his or her turn. In a single day a large number of people can be trained in fire extinguishing techniques without the associated risks of a fire.

The Apollo LED is available in 3 variants. When choosing for the Fire Extinguishing Simulation Kit, you can go for the Apollo LED Training Fire Extinguisher Squeeze Handle 6 L, the Apollo LED Training Fire Extinguisher Push Button 6 L or the Apollo LED CO2 Training Fire Extinguisher 2 L.







## *Smoke*

Smoke generators come in many different types and sizes, as different incidents require different approaches. Anything is possible, from small smoke volumes simulating a fire in its ignition phase to the realistic smoke volume of a fully developed forest fire. The FireWare smoke generators Cumulus and Stratus are designed to simulate any situation. These generators grow even more versatile by adding various matching accessories.

The FireWare Nimbo and Cirrus are more compact alternatives, yet offer other advantages. The Fireware Nimbo is a small, convenient generator that produces continuous smoke output, whereas the fully battery-powered, lightweight Cirrus produces impressive smoke output in less than 2 seconds. Perfect for training locations without electrical power supply!

All generators operate on water-glycol smoke fluids. FireWare has a wide range of water-glycol based fluids. From a light damp to a heavy fog. The Cirrus requires special Cirrus Fluid.

## Specifications

Article number: 001-012-001  
Power consumption: 800 W  
Material: Partly stainless steel  
Weight: 3.83 kg  
(5.51 kg with plastic box)

Plastic box 40 x 30 x 23.5 cm  
included 038-091-001

## Accessories

008-012-013 Wireless Remote Nimbo

Wired remote 10m included



Plastic box 40 x 30 x 23.5 cm included



Nimbo front view

# FireWare Nimbo

The compact FireWare Nimbo smoke generator is easy to operate and swiftly fogs up a room the size of a large office or hotel room. Its compact size and high quality make it a perfect training device.

The machine is ready for use after a short warm-up period of 2 minutes. The Nimbo can generate a continuous smoke output which makes it perfect for training exercises that require a consistent smoke level. We recommend FireWare Heavy or Outdoor fluid to fully fog up larger rooms.

The device comes with a 10m wired remote control. A wireless remote for the Nimbo is also available as an additional accessory. The Nimbo is conveniently stored in a plastic 40 x 30 x 32,5 cm case.





Cumulus front view



Remote for Cumulus

## Specifications

|                    |                                       |
|--------------------|---------------------------------------|
| Article Number:    | 002-012-001                           |
| Power Consumption: | 230 V, 50 Hz / 120 V, 60 Hz<br>1300 W |
| Dimensions:        | 50.3 x 25 x 24.5 cm                   |
| Weight:            | 10.5 kg                               |
| Material:          | Stainless steel                       |

Plastic box 60 x 40 x 32.5 cm  
included

## Accessories

|             |  |
|-------------|--|
| 008-012-007 | Aiming Piece                               |
| 008-012-015 | Wireless Remote                            |
| 008-012-011 | Smoke Hose Set                             |
| 008-012-016 | Smoke Hose Set Perforated                  |
|             | Wired remote 10m included                  |
|             | 5L FireWare Medium Smoke<br>Fluid included |



# FireWare Cumulus

The FireWare Cumulus (1300W) is developed based on years of experience. This versatile smoke generator effortlessly and quickly fills a large-sized room with smoke, but can also simulate a smouldering fire, as its output is adjustable from 1 to 99%. If set at a percentage up to 48%, the device can generate a continuous smoke output. The Cumulus can also be placed in an upright position to produce a vertical smoke billow. This generates a realistic, layered build-up of smoke against the ceiling.

The casing is made of stainless steel and is provided with 6 vents for proper ventilation. There is a Storz connection at the front of the generator to connect a smoke hose, a smoke guiding piece or a Storz adaptor. Furthermore, the Cumulus disposes of a build-in timer and it can be controlled via DMX.

The included Neutrik connector can be used to connect other devices, for example a FireWare FireSpot. The smoke generator is delivered including 5 litres FireWare Medium Smoke Fluid and a remote control with 10 metres of cable. It is stored in a convenient plastic case measuring 60 x 40 x 32,5 cm. A wireless remote is optional.

## Specifications

Article number: 002-012-002  
Power consumption: 230 V, 50 Hz 2600 W  
Dimensions: 53 x 25 x 24.5 cm  
Weight: 12.7 kg  
Material: Stainless steel

Plastic box 60 x 40 x 32.5 cm 038-091-013  
included

## Accessories

008-012-007 Aiming Piece  
008-012-015 Wireless Remote  
008-012-011 Smoke Hose Set  
008-012-016 Smoke Hose Set Perforated

Wired remote 10m included  
5L FireWare Medium Smoke  
Fluid included



Neutrik connector



FireWare Stratus

# FireWare Stratus

The FireWare Stratus (2600W) can easily fill a huge room with smoke. Its output is adjustable from 1 to 99%. If set at a percentage up to 48%, the device can generate a continuous smoke output. The Stratus can also be placed in an upright position to produce a vertical smoke billow. This generates a realistic, layered build-up of smoke against the ceiling.

The casing is made of robust stainless steel and is provided with 6 vents for proper ventilation. There is a Storz connection at the front of the generator to connect a smoke hose, a smoke guiding piece or a Storz adaptor. Furthermore, the Stratus disposes of a build-in timer and it can be controlled via DMX.

The included Neutrik connector can be used to connect other devices, for example a FireSpot. The smoke generator is delivered including 5 litres FireWare Medium Smoke Fluid and a remote control with 10 metres of cable. It is stored in a convenient plastic case measuring 60 x 40 x 32,5 cm.

The FireWare Stratus has an output twice as powerful as the FireWare Cumulus. A wireless remote is optional.







Cirrus front view



Cirrus ducting adapter

## Specifications

Article number: 003-012-001  
 Dimensions: 22.3 x 10 x 21 cm  
 Weight: 5.7 kg  
 Power Consumption: 12 V 400 W  
 Material: Stainless steel

Plastic Box 30 x 20 x 22 cm included 038-091-013

## Accessories

008-012-015 Wireless Remote  
 009-030-018 Cirrus Fluid 250 ml  
 009-030-019 Cirrus Fluid 2 L  
 008-002-010 Cirrus Ducting Adapter



# FireWare Cirrus

Over the years, FireWare has been confronted with countless training situations that required instant smoke production under varying circumstances. In order to address this need, the FireWare Cirrus was developed. It is a battery-powered smoke generator, easy to carry and lift. This expands its versatility from use at fully equipped training locations indoors, to use at training locations without a power supply, like a demolition site or a ship, or even for smoke sensor testing purposes.

The Cirrus is small but solid, and its casing is made of stainless steel. No need to pre-heat, the device offers instant smoke output with just one touch of the button on the handle or on the optional wireless remote. The volume of the smoke output can be adjusted on the machine itself. The compact smoke generator can produce a continuous smoke output for 10 minutes or 250 ten-second puffs on one battery charge.

The FireWare Cirrus is delivered in a plastic case, including 250 millilitres of Cirrus Fluid and a charger. The wireless remote can be optionally ordered.

## Specifications

Article number: 025-012-002  
Dimensions: 30 x 21 x 11 cm  
Weight: 0.75 kg  
Voltage: 230 V  
Voltage smoke unit: 16 V  
Protection: IP 20

## Accessories

009-030-018 Cirrus Fluid 250 ml  
009-030-019 Cirrus Fluid 2 L



Smokey Multi Socket in operation

# Smoky Multi Socket

The Smoky Multi Socket appears and functions like a distribution block. However, when the switch on the connected wired remote control is turned on, the socket starts smoking and crackling softly, simulating the first stage of a short-circuit. As soon as the plug is removed from the socket, the smoking and crackling stops. After all, the “danger” has subsided.

The Smoky Multi Socket is very suitable for practical and theoretical classes. After all, any device can be plugged into the multiple socket; from a hand blender in a kitchen to a teacher’s laptop in a classroom. Test your students’ responsiveness with this unique smoking multiple socket!

The multiple socket has 6 power plugs, 4 of which are functional. A tiny smoke generator is built-in in between the other plugs. When the smoke element is activated, the LED light is on. A syringe to fill up the generator and a bottle of Cirrus smoke fluid are included.





Smoke Aiming Piece

## Specifications

Article number: 008-012-007  
Material: Stainless Steel

# Smoke Aiming Piece Cumulus/ Stratus

Both the FireWare Cumulus and the FireWare Stratus can be used in an upright position to produce vertical smoke billows. However, vertical smoke can also be generated while keeping the device in a horizontal position. For this purpose, the Smoke Aiming Piece Cumulus/Stratus was developed. This appliance will help you guide the smoke in any direction.

The Smoke Aiming Piece's position is adjustable. The smoke generator can stay in a horizontal position while directing the smoke with the guiding piece.



## Specifications

|                                    |                                  |
|------------------------------------|----------------------------------|
| Article number:                    | 008-012-011                      |
| Dimensions:                        | 10 m x 152 mm                    |
| Material:                          | Polyamide with coating           |
| Weight:                            | 2.9 kg<br>(8.27 kg as boxed set) |
| Plastic box 60*40*32.5 cm included | 038-091-013                      |



Smoke Hose Set



Plastic box 60\*40\*32,5 cm included

## Smoke Hose Set closed

The Smoke Hose Set consists of an adapter for the FireWare Cumulus/Stratus and a smoke hose with a diameter of 152 mm packed in a plastic box. The voluminous size of the hose and its frame of metal rings allows a vast amount of smoke to be transported through the hose.

A smoke hose set comes in very handy whenever a smoke machine needs to be positioned at some distance from the staging. This could be the case if the use of water is needed during an exercise. A smoke hose is also the perfect aid to simulate leakages, to introduce smoke into an explosion proof environment, or to connect a smoke machine to a piping system.

The exterior is equipped with wear strips to protect the hose against damage when dragged along the ground, or during use under demanding circumstances. Cuffs have been applied to both ends of the hose. These cuffs make sure the hose can easily be secured to piping. The three attachment loops and the integrated straps can be used to fix the hose.

Available in a closed version to bring smoke to another place and in a perforated version. A perforated hose gives a nice effect for example a forest fire.





Plastic box 60 x 40 x 32,5 cm included



FireWare Cumulus/ Stratus adapter

## Specifications

|                 |                                  |
|-----------------|----------------------------------|
| Article number: | 008-012-016                      |
| Dimensions:     | 10 m x 152 mm                    |
| Material:       | Polyamide with coating           |
| Weight:         | 2,9 kg<br>(8,27 kg as boxed set) |

Plastic box 60 x 40 x 32,5 cm 038-091-013  
included



## Smoke Hose Set Perforated

The Smoke Hose Set consists of an adapter for the FireWare Cumulus/ Stratus and a smoke hose with a diameter of 152 mm packed in a plastic box. The hose's voluminous size and frame of metal rings allows a vast amount of smoke to be transported through the hose.

The FireWare Perforated Smoke Hose Set will allow you to simulate smoke flow, temperature and flame (RSTV/SFTF) signals by placing the perforated smoke hose along the eaves. Think of staging a realistic wildfire by allowing small puffs of smoke to come out of the perforated holes across a larger area.

The outside of the smoke hose is equipped with wear strips, which ensure the hose is very resistant to being dragged along the ground. Cuffs have been applied to both ends of the hose. These cuffs make sure the hose can easily be secured to piping. The three attachment loops and the integrated straps can be used to fix the hose.

## Specifications

|          |             |
|----------|-------------|
| Light:   | 009-030-001 |
| Medium:  | 009-030-002 |
| Heavy:   | 009-030-003 |
| Outdoor: | 009-030-005 |

|             |                       |
|-------------|-----------------------|
| Dimensions: | 18.5 x 13.5 x 23.5 cm |
| Volume:     | 5 L                   |
| Weight:     | 5.32 kg               |



Smoke Fluid Light



Smoke Fluid Medium

## Smoke Fluids

All standard smoke fluids are manufactured with double distilled water, which is suitable for all smoke machines that function on water-glycol basis. When used correctly it does not leave any deposit. The cans perfectly fit in the back of the Cumulus and Stratus smoke machines.

**FireWare Light** Smoke Fluid is developed for indoor use. The fluid creates a smoky atmosphere whereby it is still possible to see through the smoke. The smoke clears quickly. FireWare Light Smoke Fluid is very suitable for small rooms, such as an office or a kitchen.

**FireWare Medium** Smoke Fluid is developed for indoor use. You can use the smoke to fill smaller rooms with a slightly denser smoke, but also to simulate a fire in a canteen. Due to its versatility, the medium variety is our best-selling smoke fluid.







Smoke Fluid Heavy



Smoke Fluid Outdoor



**FireWare Heavy** Smoke Fluid is a very heavy smoke fluid, developed for indoor use. The smoke has a dense, non-transparent structure and will linger for a long time. You can make good use of FireWare Heavy Smoke Fluid in large spaces, such as a barn.

**FireWare Outdoor** Smoke Fluid is developed for use outdoor, however the force of the wind does have an influence on this. With this smoke fluid you can, for example, simulate a forest fire. The density of the smoke allows it to stay intact at high temperatures for quite a long period. Because the smoke stays intact with high temperatures, you can use this smoke fluid in combination with real fire.

## Specifications

|                |               |
|----------------|---------------|
| Article number | 009-030-018   |
| Dimensions:    | 14 x 6 x 4 cm |
| Weight:        | 0.3 kg        |
| Volume:        | 0.25 l        |

## FireWare Cirrus Fluid 250 ml

The FireWare Cirrus Fluid is suitable for both FireWare battery operated smoke machines, like the FireWare Cirrus, and the Smoky Multi Socket.





## Specifications

|                   |                   |
|-------------------|-------------------|
| Cirrus Fluid 2 L: | 009-030-019       |
| Dimensions:       | 14 x 10,5 x 19 cm |
| Weight:           | 2.35 kg           |
| Volume:           | 2 L               |

## FireWare Cirrus Fluid 2 L

The FireWare Cirrus Fluid is suitable for both FireWare battery operated smoke machines, like the FireWare Cirrus, and the Smoky Multi Socket.

## Specifications

Maxi set: 025-021-004  
Mini set: 025-021-003

Plastic box 60 x 40 x 13 cm  
included

## Accessories

Nebula Upgrade Kit mini to maxi 025-021-005  
Nebula AR Blinding Band (fully  
customisable) 025-021-008



Blindmask and Remote control



Mask placed over respiratory protection gear

# FireWare Nebula AR Smoke Simulation Mask

Do you want to simulate smoke in places where practice smoke is not desirable? This is possible with the new FireWare Nebula AR Smoke Simulation Mask! The participants wear a special ski mask equipped with an LCD screen. The mask can be put directly over the face, but it can also be used combined with the respiratory protection gear when using the designated blinding band. The screen of the Nebula AR varies in transparency at the touch of a button, allowing to simulate 6 different smoke thicknesses.

Using the Nebula, the student experiences impaired visibility created by smoke whilst the instructor has a clear view, which gives room for optimal feedback. The Nebula also has a random mode, in which the mask gives an irregular smoke pattern with varying visibility.

With the included remote control, the instructor can control up to 4 groups of masks. Each group may consist of a practically unlimited number of masks. If someone panics, just press the panic button and the student will have full visibility immediately. The mask can be worn directly on the face or over a breathing apparatus. All electronics are neatly concealed in the housing of the mask: no loose wires or loose boxes, which makes it a safe experience! You can charge the mask via a mini USB connection.





Nebula AR Blindmask



Plastic box with foam interior included



There are two Nebula AR mask sets available:

**The MAXI set consists of:**

- 1 instructor unit (remote control )
- 4 Nebula AR Smoke Simulation masks 1 charging hub with 5 charging cables
- Instruction manual
- All neatly packed in a box with foam interior

**The MINI set consists of:**

- 1 instructor unit (remote control )
- 2 Nebula AR Smoke Simulation masks
- 1 charging hub with 3 charging cables
- Instruction manual
- All neatly packed in a box with foam interior







## *Training Extinguishers*

Our training extinguishers can be easily re-filled, manually or with the Neptune filling system for added user comfort. Good for the wallet and friendlier towards the environment.

For training exercises on gas-fired fire extinguishers you can fill them with water and practise foam. If the practice scenarios are equipped with simulated fire, they can be filled with pressurized air. This way, even with simulated fire, the complete training procedure can be practiced.

## Specifications

Article number practice 025-100-003  
Extinguisher Button 6 L  
Weight 5.2 kg

Article number practice 025-100-005  
Extinguisher Button 9 L  
Weight 6.6 kg

## Accessories

FireWare practice foam 025-014-001  
Open-ended Spanner 061-100-003  
Circlips for training fire extinguisher button 061-100-001



Open-ended Spanner



Circlips for Practice Extinguisher Button

# Neptune Training Fire Extinguisher Button

With the Neptune Training Fire Extinguisher (Push) Button, students are taught all necessary techniques to handle a real-life situation.

Some practice situations are not compatible with the use of foam or water. Therefore, in addition to filling the practice extinguisher with water and foam, it is also possible to just pressurize the extinguisher. Students still have to choose the correct extinguishing agent before launching an attempt to put out the "fire". Using just pressurized air works very well in combination with a Silkflame.

The training fire extinguisher is easy to fill by unscrewing the top with a key. Next, add (if desired) a layer of practice foam and water and pressurize the extinguisher with a simple compressor via the auto valve stem or the coupling on the hose. The filling pressure can be read on the pressure gauge.

Use the Training Fire Extinguishers with the FireWare Neptune Filling Unit for even more convenience. Extra circlips, O-rings and an open-ended spanner to unscrew the top are optionally available.

Note: As it is a simulation tool, the push button wouldn't work like on a real extinguisher.





Practice Extinguisher without hose



Lock Pins for Practice Extinguisher Squeeze Handle

### Specifications

|   |             |
|---|-------------|
| Article number Practice Extinguisher Squeeze Handle 6 L | 025-100-001 |
| Weight  | 4.83 kg     |
| Article number Practice Extinguisher Squeeze Handle 9 L | 025-100-004 |
| Weight  | 6.6 kg      |

### Accessories

|   |             |
|---|-------------|
| FireWare practice foam                            | 025-014-001 |
| Lock Pins (10 pieces)                             | 066-100-005 |
| Seal for Lock Pins 500 pcs                        | 061-100-005 |
| Open-ended Spanner for Training Fire Extinguisher | 061-100-003 |
| O-rings for Training Fire Extinguisher 10 Pcs.    | 025-018-005 |

## Neptune Training Fire Extinguisher Squeeze Handle

With the Neptune Training Fire Extinguisher (Squeeze) Handle, students are taught all necessary techniques to handle a real-life situation.

Some practice situations are not compatible with the use of foam or water. Therefore, in addition to filling the practice extinguisher with water and foam, it is also possible to just pressurize the extinguisher. Students still have to choose the correct extinguishing agent before launching an attempt to put out the "fire". Using just pressurized air works very well in combination with a Silk flame.

The extinguisher is easy to fill by unscrewing the top with a key. Next, add (if desired) a layer of practice foam and water and pressurize the extinguisher with a simple compressor via the auto valve stem or the coupling on the hose. The filling pressure can be read on the pressure gauge.

Use the Training Fire Extinguishers with the FireWare Neptune Filling Unit for even more convenience.



## Specifications

Article number 025-012-007  
Dimensions: 60 x 40 x 32.5 cm  
Weight: 16.26 kg  
Container 5 L Practice foam 025-014-001 included

## Accessories

025-100-006 Compressor for Neptune  
025-014-001 FireWare practice foam 5L  
025-014-003 FireWare practice foam 20L



Simple interface of the Neptune



Build in a plastic box 60 x 40 x 32,5 cm

# FireWare Neptune Filling Unit

The Neptune is designed to refill your own training extinguishers quick and easy. Connect the air compressor hose to an external compressor (not included, optionally available) and connect the second hose to a water tap. Now hook up the foam tank and start filling 1 to 3 training extinguishers simultaneously!

The amount of foam that is to be added can be set by opening the valve between 0 to 100%. The system is mechanical.

The Neptune is supplied in a stackable plastic box measuring 60 x 40 x 32,5 cm, including a 5L can practice foam.





Compressor for FireWare Neptune

## Specifications

|                                   |                       |
|-----------------------------------|-----------------------|
| Article number:                   | 025-100-006           |
| Weight:                           | 23 kg                 |
| Air input:                        | 190 L/min             |
| Sound level:                      | LWA 90 dB / LpA 72 dB |
| Power:                            | 1.5 PK                |
| Plastic box 60 x 40 x 44 included | 038-091-036           |



## Compressor for Neptune

Developed for the FireWare Neptune Filling Unit. The Neptune is designed to fill training extinguishers. The compressed air system will achieve a safe maximum of 15 bar. The compact size and plastic box make it easily transportable.

## Specifications

|                       |             |
|-----------------------|-------------|
| Article number (5 L): | 025-014-001 |
| Article number (20L): | 025-014-003 |

## FireWare Practice Foam

To put out a fire with practice foam, the student will need to properly master the technique. The effectiveness of training foam is less efficient than the extinguishing effect a real spray foam offers. As a result, the student has more time practising the extinguishing technique.

FireWare Practice Foam is suitable for use in practice extinguishers such as the spray foam practice extinguishers. The practice foam is Fluor free and 100% biodegradable and is therefore fit for use at various locations. Dermatologically tested, does not provoke skin irritations.







Apollo LED CO2 Training Fire Extinguisher 2 L



Lock pins (10 pieces)

## Specifications

|                |             |
|----------------|-------------|
| Artikelnummer: | 025-100-013 |
| Volume:        | 2 L         |
| Weight:        | 6.84 kg     |
| Charging time: | 2 hours     |

## Accessories

|                               |             |
|-------------------------------|-------------|
| Lock pins (10 pieces)         | 066-100-015 |
| Seal for lock pins 500 pieces | 061-100-005 |



# Apollo LED CO2 Training Fire Extinguisher 2 L

If you want your students to gain experience in extinguishing techniques using a CO2 extinguisher, then the Apollo LED CO2 Training Fire Extinguisher 2 L is the perfect LED-based simulation extinguisher. This practice extinguisher can be used when training people to extinguish liquid fires and fires that break out in electrified equipment. The Apollo LED CO2 Training Fire Extinguisher is small, but because it has been weighted it feels very much like a real fire extinguisher.

Student can operate the Apollo LED training fire extinguisher just like a standard CO2 fire extinguisher. The student removes the safety pin and as soon as the handle is squeezed the extinguisher replicates the sound of a real extinguisher spraying and a blue LED light is emitted from the nozzle, allowing the instructor to teach the student how to focus the extinguishing agent. Tijdens gebruik zal de virtuele tank geleidelijk leeglopen. The tank gradually empties while it is in use. The tank level is shown using 4 LED lights. The training fire extinguisher can operate for about 30 seconds on a full tank, and when it is almost empty the Apollo LED replicates the sound of a sputtering extinguisher.

Just like a real CO2 fire extinguisher, the Apollo LED Training Extinguisher leaves no water, foam or powder residuals. This means that students can quickly swap places – an attractive and risk-free introduction to fighting fires!

## Specifications

Artikelnummer: 025-100-015  
Volume: 6 L  
Weight: 8,8 kg  
Battery: 3,7 V / 2600 mAh  
Charging time: 2 uur

## Accessories

Circlips for training fire  
extinguisher button 061-100-001



LED Lighting



Circlips for Training Fire Extinguisher Button

# Apollo LED Training Fire Extinguisher Push Button

Use the Apollo LED Training Fire Extinguisher Push Button 6 L to teach students proper techniques for extinguishing fires. Because the extinguishing spray is simulated using LED lighting, you can practice in places where it would normally be impossible or difficult to do so or where water, foam or powder cannot be used. The training fire extinguisher weighs the same as a real fire extinguisher, which means that students handle it the same way they would handle an actual extinguisher.

The instructor simply activates the Apollo LED Training Fire Extinguisher Push Button by pushing a button located on the top. The practice extinguisher works exactly like a standard button-operated extinguisher and can now be handed over to the student. Before the student can activate it, the safety pin must be removed from the extinguisher, after which the squeeze handle can be operated as soon as the button is depressed. When the handle is squeezed the extinguisher replicates the sound of a real extinguisher spraying. A powerful blue LED light is also emitted from the nozzle, allowing the instructor to teach the student how to focus the extinguishing agent. The Apollo LED Training Fire Extinguisher Push Button has a virtual tank that gradually empties while it is in use. The tank level is shown using 4 LED lights. The fire extinguisher can operate for about half a minute on a full tank, and when it is almost empty the practice extinguisher replicates the sound of a sputtering extinguisher.

Note: As it is a simulation tool, the push button wouldn't work like on a real extinguisher.





Squeeze Handle



Lock pins (10 pieces)

## Specifications

|                |                  |
|----------------|------------------|
| Artikelnummer: | 025-100-015      |
| Volume:        | 6 L              |
| Weight:        | 8,8 kg           |
| Battery:       | 3,7 V / 2600 mAh |
| Charging time: | 2 uur            |

## Accessories

|                            |             |
|----------------------------|-------------|
| Lock pins (10 pieces)      | 025-014-001 |
| Seal for Lock Pins 500 pcs | 061-100-005 |
| O-rings for Training Fire  | 061-100-003 |
| Extinguisher 10 Pcs.       |             |



# Apollo LED Training Fire Extinguisher Squeeze Handle

Thanks to the Apollo LED Training Fire Extinguisher Squeeze Handle 6 L, students can learn to deal with an incipient fire in any environment. There are times when one is unable to practice extinguishing real fires in certain locations. The Apollo LED Training Fire Extinguisher emits a powerful LED light that allows students to properly practice the safe use of fire extinguishers and how to act in the event of a fire. The practice extinguisher weighs the same as a real one, which means that students are confronted with a true-to-life situation.

The instructor activates the Apollo LED using a button located on the top of the device, and the extinguisher is operated using the squeeze handle, just like a standard fire extinguisher. The student removes the safety pin and, as soon as the handle is squeezed, the device makes a noise like a fire extinguisher in use and a blue LED light is emitted from the nozzle. This allows the instructor to train students how to focus the extinguishing agent.

The virtual tank will gradually empty while the fire is being extinguished – the level can be seen by the four LED lights on top of the practice extinguisher. A full tank will empty in approximately 30 seconds, and once it is empty the extinguisher will start to sputter. When you use the Apollo LED you keep the area clean, and that means that in a single day a large number of people can be trained to extinguish fires!





## Scent

In general, scent is the first trigger of a fire. Flames may be not visible due to thick smoke and cracklings get weak from distance. Yet the scent of fire travels far. In the event where smoke layers haven't developed yet, the sense of smell can be used to locate a fire. That's how scent substantially adds to the realistic level of a fire training.

Adding smell to a scenario can always offer an interesting twist to the training. Whilst a firefighter is outside, preparing to enter a burning building, his adrenaline level increases as the realistic level of the scenario does. Adding the scent of fire to smoke oozing out of the door, triggers the firefighter's emotional state of mind. Stage a scenario that is almost like the real thing.

Not only firefighters are confronted with fire incidents. Emergency response teams also respond to incidents happening in the office. In general, office employees are first and foremost alarmed by the smell of fire or a gas leakage. People use all their senses in real life, so why not during training situations?

## Specifications

|                 |                     |
|-----------------|---------------------|
| Article number: |                     |
| Burning smell   | 031-030-003         |
| Chemical smell  | 031-030-004         |
| Dimensions:     | 5.2 x 5.2 x 14.5 cm |
| Weight:         | 0.17 kg             |
| Volume:         | 0.15 L              |
| Operation:      | Aerosol-Spray       |



Aerosol spray

## Burning Smell Spray

The FireWare Burning Smell Spray is an aerosol spray with the smell of fire. The spray is used like an air freshener and has a profound effect on the level of realism for an exercise. Smell is often the first sense triggered in case of a fire.

The Burning Smell Spray trigger the sense of smell and it immediately triggers the student. Smell also plays an important role in locating a fire. For example, use the Burning Smell Spray to stage a small office fire. Use the spray to leave the scent of a fire inside the office implied and along the hallway leading to the office. The scent lingers for a while, and the student will follow his nose trying to locate the fire.

## Chemical Smell Spray

The FireWare Chemical Smell Spray is an aerosol spray containing a chemical smell. The spray is used like an air freshener and has a profound effect on the level of realism for an exercise.

Try using the Chemical Smell Spray to stage a scenario involving a gas leakage or spilled chemicals. Spray the incident site and its surroundings just minutes before the intervention and teach your students to use all of their senses to locate the incident.







Burning Smell Extract to add a scent of fire

## Specifications

Article number: 009-030-026  
Volume: 500 ml



## Burning Smell Extract

Burning Smell Extract is used to add the scent of a fire to FireWare smoke fluid. The level of realism of a training exercise increases as this scent is added. In general, the first sense that is triggered in case of a fire, is scent. It helps signalling and locating the fire. Trigger your trainees by adding the scent of a fire to your fire training exercise!

Use the convenient dosing cap to measure the necessary volume of burning smell extract. A minimum mixing ratio of 5 millilitres and a maximum mixing ratio of 25 millilitres on a 5-litre can is advised. Note that the scent will linger.

This burning smell extract is very suitable for outside use when combined with FireWare Outdoor Smoke Fluid. Just think of how realistic a wildfire training will become. In addition, Burning Smell Extract is suitable to mix with FireWare's Light, Medium and Heavy fluid.





## ***CBRNE***

Incident management involving hazardous substances requires a high level of watchfulness, as the substances are often highly explosive or toxic. The spill of these kinds of substances may have huge adverse consequences on public health. Therefore, emergency response team members should be able to identify the substances and their hazards.

To practice incidents involving hazardous substances, FireWare offers a range of products for realistic staging. For example magnetic plates depicting hazard warning safety signs and ADR numbers to practice with the Crash Recovery System, and fluids to colour water.

## Specifications

|                          |             |
|--------------------------|-------------|
| Set 6 pcs in plastic box | 025-030-009 |
| Red Fluid                | 025-030-003 |
| Blue Fluid               | 025-030-005 |
| Yellow Fluid             | 025-030-004 |
| Green Fluid              | 025-030-006 |
| White Fluid              | 025-030-008 |
| Black Fluid              | 025-030-007 |

Volume per bottle: 0,5l

## Accessories

038-091-015 Plastic box 30 x 20 x 22 cm



Set 6 pcs in plastic box 30 x 20 x 22 cm

# Color Fluid

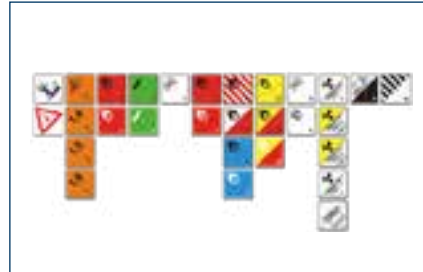
Use FireWare Color Fluid to safely turn water into a simulation of a chemical substance. A few drops in a large barrel of water is enough to give the water an intense colour. The different colours are also mixable in order to create the colour of choice.

The size of the colour fluid's bottle is 500 ml. A set contains all 6 colours and is delivered in a plastic case.





Plastic box for transport included



Magnetic Danger Symbol Set

## Specifications

|                                     |                  |
|-------------------------------------|------------------|
| Article number:                     | 028-030-003      |
| Dimensions:                         | 26 x 26 x 0.2 cm |
| Plastic box 40 x 30 x 8 cm included | 038-091-021      |

# Magnetic Danger Symbols Set

It is important being able to anticipate and recognize hazards, evaluate exposures and control and confirm protection from possible risks involved. Creative use of different risk indicators may call for completely different methods of action within the same scenario.

The Magnetic Danger Symbols Set contains 25 magnetic signs packed in a solid plastic case. The signs are easy to bring along and their flexibility allows them to be attached on virtually any metal surface.





## Specifications

|                                    |                     |
|------------------------------------|---------------------|
| Article numbers:                   | 028-030-004         |
| Dimensions:                        |                     |
| Board                              | 25 x 35 x 0.2 cm    |
| Numbers                            | 8.2 x 10.8 x 0.2 cm |
| Plastic box 40*30*8 cm<br>included | 038-091-021         |



Plastic box included

## Magnetic ADR Number Set

Use the ADR Numbers Set to identify the transported goods by their UN-numbers. This provides an indication of the possible transportation risks. First responders need to be familiarised with these indications.

Attaching ADR codes to vehicles during a training can allow various incident approaches to be applied to a single scenario. Both the numbers and the panel are magnetic.

The ADR Numbers Set is packed in a solid plastic box and contains four complete sets of numbers ranging from 0-9 and a letter X. Use the numbers to compose the hazmat class transported goods and the letter X as a warning not to use water for extinction.







Battery charger



Remote control

## Specifications

|                 |                             |
|-----------------|-----------------------------|
| Article number: | 025-026-003                 |
| Power supply:   | Battery pack                |
| Gas supply:     | Propane                     |
| Volume:         | 120 dB                      |
| Operation:      | On device<br>Remote control |



# Electronic Explosion Simulator

The Electronic Explosion Simulator, simulates the sound of an explosion up to as much as 120 decibels. No more legal and practical hassle of using pyrotechnics, just one touch of the button to simulate an explosion. The blast interval is electronically regulated using a built-in timer.

The volume is set by sliding the barrel in or out. The blast is big and makes the surroundings quiver. Beware, the Electronic Explosion Simulator can only be used outdoors.

The Explosion Simulator is equipped with a regulator valve and uses an ordinary propane bottle, which is not included. A battery, charger and remote control are included in the set.

## Specifications

Article number 028-030-009  
Dimensions board: 25 x 25 cm  
Numbers: 27

Plastic box 40\*30\*8 cm  
included



Plastic box included

## NFPA (Hazard Rating) Diamond set, magnetic

The Hazard Rating Diamond, or NFPA-704 diamond, allows first responders to assess the hazards of a certain chemical substance. It is a convenient means to identify health risks, flammability and reactivity hazards of hazardous materials (Hazmats). The NFPA diamond is particularly useful in fire fighters' trainings. The fire fighters can quickly establish the expected reaction of a chemical compound when in contact with water or assess the appropriate extinguisher.

This set, comprising 27 different elements, is fully magnetic and consists of the NFPA Diamond as well as the numbers 0 to 4 in the colours yellow, red and blue. The special indications are in white. All magnetic signs are flexible which allows them to stick to virtually any given metal surface. The set is delivered in a convenient plastic box for storage and transport.





[www.FireWare.nl](http://www.FireWare.nl)





## *Sound*

The use of sound effects increases the realistic level of an exercise. Cries for help can give crucial information on the victim's whereabouts and the crackling sounds of a fire can give away its location or size.

The FireWare sound solutions provide numerous options for creating a realistic setting. Add the sound of a dog barking, a baby crying, a thunderstorm, or buildings collapsing. It is also possible to have men and women calling for help in multiple languages. For every setting, there is a different sound.

## Specifications

|                      |  |
|----------------------|--|
| Article numbers:     | 025-012-024  |
| Weight:              | 1,3 kg   |
| Power:               | 2 x 20 Watt  |
| IP Rating:           | IPx7 waterproof                                      |
| Control:             | On Fusion + via app, or with optional remote control |
| Speaker:             | 2 x 2,5"   |
| Power:               | 110-220 Volt DC                                      |
| plastic box included | 30*20*13 cm.   |

|                               |   |
|-------------------------------|---|
| Bluetooth range:              | App. 10 meters                                      |
| Charging time:                | 8 hours   |
| Battery:                      | High Power lithium Ion                              |
| Service life on full battery: | 20 hours  |
| User interface language:      | English, French, German, Dutch, Italian and Spanish |

## Accessories

|               |             |
|---------------|-------------|
| Fusion-Remote | 025-012-028 |
|---------------|-------------|



FireWare Fusion with charger



Fusion Remote

# FireWare Fusion

A diesel engine, a barking dog, fire noise, a crying baby, calls for help in various languages: just to name a few sounds that can be simulated with the FireWare Fusion! The Fusion features 45 sound effects especially designed for staging realistic training environments.

The FireWare Fusion is IPx7 water resistant and very robust. It is the perfect tool for adding sound effects to exercises where people work with a lot of water. Because of its simple operation and high sound quality, the device has an added value for every exercise. With the special application (Apple and Android) the FireWare Fusion can be operated using Bluetooth. It is also possible to stream your own sounds directly to the FireWare Fusion with your smartphone.

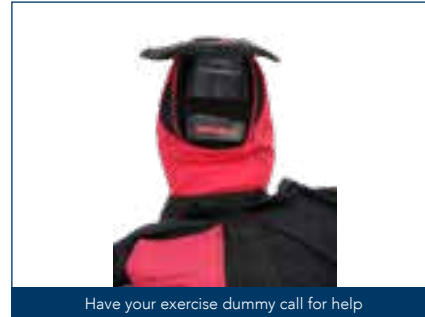
No smartphone? No problem. You can also operate the FireWare Fusion on the device itself. You get a voice feedback when you press the keys, which is very convenient! Additionally, a FireWare Fusion Remote is available.







Plastic box 30 x 20 x 13 cm included



Have your exercise dummy call for help

## Specifications

Article numbers: 025-012-004

Plastic box 30 x 20 x 13 cm included

Works with 2 AA Alkaline batteries (included)



## Shoutbox

Have your exercise dummy call for help with the Shoutbox. A pre-recorded message of maximum 60 seconds is played back. This can be done by adjusting the time interval or by using the Vox function. In that case the Shoutbox will react to the sound of a voice.

Place the Shoutbox in the exercise room or place it behind a victim dummy or in the Shoutbox mask (not included). When the students call: "Is anyone there?" the Shoutbox will react to the sound and play the pre-recorded sound. As a result a realistic interaction is created between the emergency officer and the victim.

For extra recognition you can have a colleague record a cry for help. Or use the name of the student in the recording. "Marcel, is that you? Please help me! I'm stuck under a cupboard and cannot feel my legs anymore!"

The volume of the Shoutbox can be adjusted in the digital menu structure. The appliance operates on 2 AA alkaline batteries and is supplied in a solid case.

## Specifications

Article number: 025-012-003  
Power consumption: 8 x 1.5 V D battery  
Weight: 3.47 kg  
Dimensions: 29 x 22 x 16,5 cm  
Operation: On device

## Accessories

038-091-015 Plastic box 30 x 20 x 22 cm



Optional plastic box 30 x 20 x 22 cm

# Crackle Box

The Crackle Box is useful to simulate a fire in a quick and in a conventional way during an exercise. The blue box is equipped with an amber, flashing xenon globe and generates a crackling sound.

The Crackle Box is simple to use. Therefore, the box is quick and easy to set up during an exercise. Flick the switch to get the box to start crackling and flashing. The Crackle Box operates using 8 D batteries (included) and is equipped with a handle.





Bottom view with speaker and on/of switch



Available in two different colors

## Specifications

|                       |                     |
|-----------------------|---------------------|
| Article number red:   | 025-027-003         |
| Article number green: | 025-027-004         |
| Power supply:         | Accu                |
| Dimensions:           | 46 x 22 cm diameter |
| Weight:               | 7.73 kg             |
| Operation:            | On device           |

## Accessories

|             |                               |
|-------------|-------------------------------|
| 038-091-013 | Plastic box 60 x 40 x 32.5 cm |
|-------------|-------------------------------|

# Electronic Practice Gas Cylinder

The Electronic Practice Gas Cylinder simulates a leaking gas cylinder. A hissing sound can be heard from the built-in speakers and can be controlled using the gas tap. Try combining the practice gas cylinder with a chemical smell spray, you will simulate a realistic scenario in no time at all!

The gas cylinder operates on a built-in rechargeable battery, therefore you have no cables. Its effect is therefore extremely realistic. The bottle can function for 6 hours on a full battery.

The gas cylinder is available in red and green. The device has a simple on/off switch and is supplied with a charger.



*“Reflecting on packaging, storage, and transport is as important as thinking about the training materials themselves”*





## *Packaging / Storage*

At FireWare we go beyond providing the training equipment. We think about how to pack, store, and transport our products as well. Training equipment is often transported from one location to another. Many of our products are therefore packed in our robust plastic boxes. This will help extend the lifespan of the product.

All plastic boxes are easily stackable. The sizes are derived from an euro pallet, which means efficient storage and transport and a lower carbon footprint. Everyone benefits of packaging in plastic boxes.

The empty, stackable plastic cases can also be separately ordered. This way you can store all your training equipment alike. For easy transport there are also wheeled base plates available.

## Accessories

Wheeled base plates:

|             |             |
|-------------|-------------|
| 60 x 40 cm  | 038-091-038 |
| 80 x 60 cm  | 038-091-011 |
| 120 x 80 cm | 038-091-037 |

|                        |             |
|------------------------|-------------|
| Drawbar for base plate | 038-091-012 |
| 80 x 60 or 120 x 80 cm |             |



Drawbar for base plate



Wheeled base plate

## Plastic boxes

FireWare offers plastic boxes in various sizes that are ideal for transportation or storage purposes. All boxes can be neatly stacked and are designed to fit on a standard euro pallet. A large number of products come with a box included. If you want to pack other things, just order an empty box. All boxes have a lid. When moving many boxes at the same time, a base plate on wheels could be a good help.

Please note, the sizes are outside dimensions.

| Dimensions:       | Handle: | Article Number: |
|-------------------|---------|-----------------|
| 20 x 15 x 12 cm   | Closed  | 038-091-007     |
| 30 x 20 x 13 cm   | Closed  | 038-091-006     |
| 30 x 20 x 22 cm   | Closed  | 038-091-015     |
| 40 x 30 x 8 cm    | Closed  | 038-091-021     |
| 40 x 30 x 23,5 cm | Closed  | 038-091-008     |
| 60 x 40 x 9 cm    | Closed  | 038-091-022     |
| 60 x 40 x 32,5 cm | Open    | 038-091-013     |
| 60 x 40 x 32,5 cm | Closed  | 038-091-001     |
| 60 x 40 x 44 cm   | Open    | 038-091-036     |
| 80 x 60 x 32,5 cm | Closed  | 038-091-010     |
| 80 x 60 x 44 cm   | Closed  | 038-091-043     |









  
**FIREWARE**

REALISTIC TRAINING ENVIRONMENTS



## *Demonstration Trainers*

Our range also offers scale models to demonstrate your students fire-dynamics, fire developments and firefighting techniques and tactics. The demo products can be used to explain how a fire develops and which tactical approach would be preferred and most safe to fight the fire. These items visualise the theoretical training, effectively support students to gain better insight and thus to become more competent, without being exposed to dangerous situations.

## Specifications

Article number: 049-027-001  
Dimensions: 60 x 80 x 60 cm  
Weight: 55 kg



Teaching in fire behaviour



Discuss the volume, flow and colour of the smoke

## Mini Fire Behaviour Trainer

The Mini Fire Behaviour Trainer is a metal scale model, which helps instructors to instruct in fire behaviour. With this learning tool, students can study the flame build-up and the entire process of a fire. Instructors also use the tool to let students practice with smoke, flow, temperature and flames. Besides, you can use a plant spray as an extinguishing agent, to teach in extinguishing. A wide variety of micro learning moments can be involved in the course.

The trainer is wood-fuelled and has a stainless steel casing. The product consists of a boiler room and a pyrolysis room. These spaces can be separated with a sliding door and are each in turn supplied with an outside door. The oxygen supply and smoke exhaustion can be regulated by means of the slideable roof on top of the trainer.

The pyrolysis room has a window that allows you to follow the development of the fire. Supports have also been installed which allow for demonstrating the development of a fire in spaces with a suspended ceiling.





Mini PPV-Trainer in Operation



Mini PPV Trainer close-up

## Specifications

|                    |                  |
|--------------------|------------------|
| Article number:    | 025-012-006      |
| Power consumption: | 230 V - 120 Watt |
| Dimensions:        | 60 x 54 x 172 cm |
| Weight:            | 59 kg            |
| Operation:         | On device        |

|            |                 |
|------------|-----------------|
| Including: | Smoke generator |
|            | 5L smoke fluid  |
|            | 2 fans          |

# Mini PPV-Trainer

With the Mini Positive Pressure Ventilation Trainer you can demonstrate and experiment with the method of operation concerning repressive ventilation. The transparent house has a basement, ground floor, first floor and attic. One part operates as the staircase. You can unlink and remove floors to make the building smaller. As a result, the trainer is also easy to clean.

The PPV-Trainer contains a smoke channel. Slides can be opened from the outside allowing smoke to flow into the desired rooms. All rooms can be filled with smoke independently. The windows, doors and dormer windows can open. In order to simulate discharges the floors have been fitted with slides.

All the slides are marked with signs. This makes it possible to define the order of the steps for easy instruction and evaluation. The various repressive techniques are exercised and studied with the 2 ventilators.

The PPV-Trainer comes standard with a flight case that can be used as a base. This creates a comfortable working platform and allows walking around the trainer. The set contains all floors, 1 smoke generator, 5 litres of smoke liquid, 2 small and 2 large plastic set of flames and 2 ventilators.











## *Interactive Training Experiences*

Create interactive and challenging scenarios at the push of a button! Our interactive training experiences allow you to control light and sound effects, projection, animation and practice smoke centrally and remotely. The equipment operation needs less attention, thus allowing the creation of clear viewed dynamic and realistic scenarios that offer the trainees an optimal learning experience and the instructor an optimal teaching experience!

## Specifications

Article number: 012-012-001  
Operation: Smartphone or tablet (not included)



Wireless operation of all parameters of a staging



Integrated webcam for observation from a distance

# FireWare Incident Server

The Incident Server allows an instructor to wirelessly operate all parameters of a staged incident with a smartphone or tablet. This includes the sound effects, flame simulation and smoke generators that turn the staging into a realistic incident. In general, the existing practice materials qualify, so there is no need to order in new equipment.

The instructor can observe the incident from a distance via the footage of the integrated webcam. The Incident Server itself hosts a wireless Wi-Fi network for the instructor to log on to. No need for complex software. Several people can operate the installation at the same time. The observers can even log on to the system and participate in the training. The built-in 4G-modem allows remote service and support, no less.

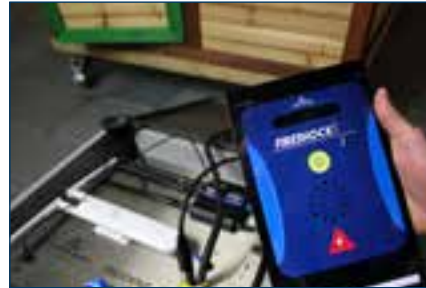
The additional inputs and outputs of the Incident Server allow operating even more special effects if sensors are activated. Moreover, the Incident Server is equipped with a digital practice gas detector, a digital practice AED and a digital practice fire alarm centre.

In short, the Incident Server is a full recipe to create a realistic, dynamic and interactive training scenario. The equipment operation needs less attention thus allowing the creation of a clear viewed dynamic and realistic scenario that offers the trainee an optimal learning experience and the instructor an optimal teaching experience!





Expand the Incident Server set



Built-in practice gas detector and practice AED

## Specifications

|                 |                                     |
|-----------------|-------------------------------------|
| Article number: | 012-012-002                         |
| Operation:      | Smartphone or tablet (not included) |



# FireWare Incident Client

The number of connectors of the Incident Server doesn't suffice in case of larger and more complex scenarios. The Incident Client however allows elaborating the possibilities infinitely. Use the Incident Server to stage the hearth and then use the Incident Client for all extra additions. This allows increasing or decreasing the incident at will.

The Incident Client connects to the Wi-Fi network of the Incident Server, but it doesn't leave it at that. The Incident Client will enhance and elaborate the Wi-Fi network. Together, they create a so-called mesh-network. Want to add another Incident Client? This will only strengthen the chain. Thus, the installation can be elaborated step-by-step.

The connecting options of the Incident Client and the Incident Server are alike, but the Incident Client also disposes of a webcam. The instructor can rely on an extra camera per Incident Client to better observe the scenario!

## Specifications

|                 |                                     |
|-----------------|-------------------------------------|
| Article number: | 010-012-001                         |
| Dimensions      | Approx. 3 x 3 x 3m                  |
| Operation:      | Smartphone or tablet (not included) |



# FireWare Interactive Incident Trainer (F.I.I.T.)

Challenge trainees by offering a customized training experience? The FireWare Interactive Incident Trainer (F.I.I.T.) is a unique training solution whereby people witness a projected incident happening on screen and are then urged to act accordingly. From the moment an incident occurs and responding to it, to the hand-off to the ambulance, the F.I.I.T. cover all phases of the incident. Thanks to the large number of different scenarios available, each participant will have his or her own training experience. You can choose to work with a LOTUS victim or a resuscitation dummy. The character in the animations is also easy recognisable as the resuscitation dummy.

Instructors observe all the activities in the scenario cabins from the waiting room with the aid of an advanced, optional video system, and provide feedback afterwards. The next trainee that enters the cabin will face a new scenario. Do your trainees act according to the incident's needs? Evaluate their skills with the F.I.I.T.!



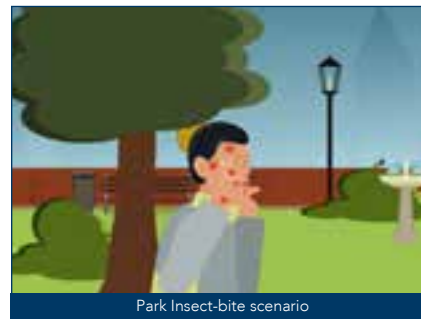




AED FireShock



Gasmeter



Park Insect-bite scenario



Hip-Fracture scenario

## Full range of a tense situation

The F.I.I.T. addresses all senses. The scenario is projected on three walls and is supported by light and audio effects. The instructor operates the installation from a smartphone and/or tablet, without having to install dedicated software. An accident is quickly staged.

Do you have access to additional tablets? These can be effortlessly turned into a practice AED or combustible gases detector. A resuscitation dummy (AMBUMAN) can be swiftly introduced into the setting. These different options allow you to discuss and train other issues than just life-saving efforts.

When the installation is set up and the controls are in place, it is time to activate the F.I.I.T. and to explore its content and scenarios. At present, we offer various settings. For example a company canteen, day care centre, warehouse, nursing home, airport or swimming pool. Within these settings, a diversity of incidents can be created. Think of a heart failure, epileptic seizure, traffic incidents, cuts and insect bites. The sky is the limit!

Options are continuously developed and expanded. We look forward to hearing your ideas for a new setting or scenario. The F.I.I.T. is updated four times a year. These updates make new settings, incidents and features available to the users. The users decide which option is prioritized. To this end, we organise a user day twice a year, where you can interact with other users and exchange ideas.









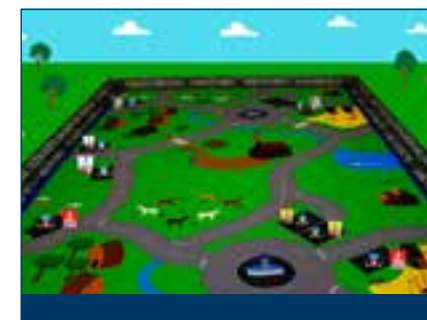
## *Didactic escape rooms & serious games*

At FireWare we believe in the effectiveness of using serious games to convey information and establish communication. Practical experience often helps people to better process information and memorise it!

FireWare has developed didactic escape rooms to teach participants in an interactive and fun way. Escape rooms have long been a household name in the entertainment industry. A group of people is trapped in a room. By solving puzzles together, the group can escape from the room. It is especially designed to test the knowledge base and resourcefulness of the target audience. Due to the limited time frame and the fact that the participants need to work together, our escape rooms and serious games create a unique learning environment.

Take a look at some of our most recent projects. If you are interested in implementing a didactic escape room or a serious game, please contact us.





## *“The Raging Reporter”*

FireWare developed a unique mobile didactic escape room especially for the COPI days of the Gooi & Vechtstreek Safety Region and the Flevoland Safety Region. In this escape room participants work on the ‘soft’ skills: communication, prioritization, collective memory, and collaboration.

The participants enter a room with a large arena with various radiographically controlled cars. Every car has unique characteristics. On a large monitor an introduction film is shown, which runs in a loop. For each participant there is a safe with a numerical lock. In this safe they can find the remote control of one of the cars.

When the game leader presses start, the game begins. On the screen, the roving reporter arrives in his press bus. He gives the participants an explanation of the game. An image will soon appear showing the location of the cars. The participants have to reproduce this setup in the arena. As soon as this succeeds, they can send a photo to the editors by pressing the button. If the setup is correct, the next setup will be shown. If the setup is not correct, the participants will have to try again.

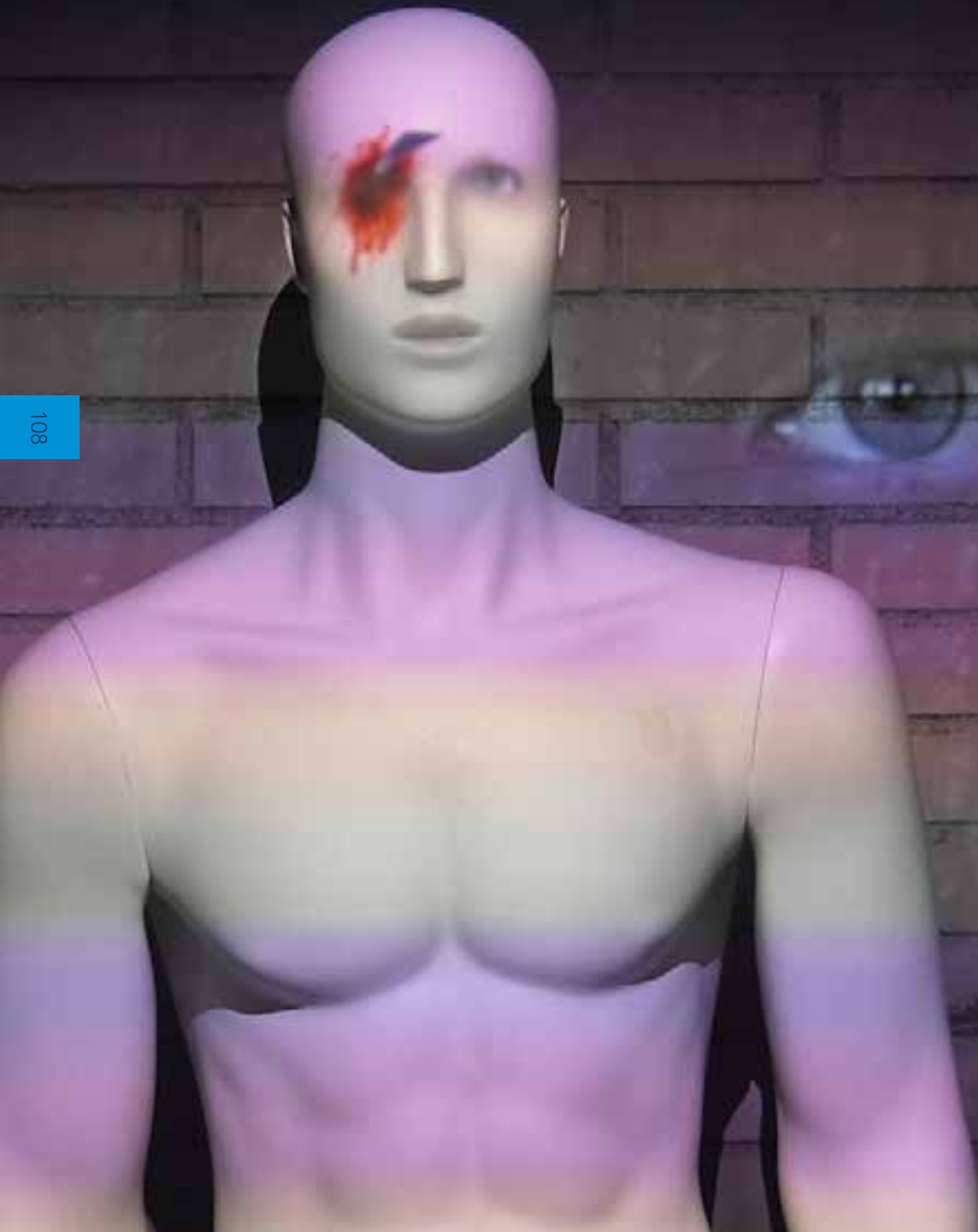
First, the participants have to access their remote control. The codes for these are displayed. But every 12 seconds the codes change position and appearance; that’s the first challenge the group has to overcome!

After having reproduced 6 setups, the game is over. On average, depending on the number of participants, the duration of the game is between 45 and 120 minutes.

The game leader evaluates the photos. He can see the photo of the requested setup on an iPad and can either approve or disapprove of the setup.

The characters and environments in the game can be adjusted to suit your needs. That way the game could really fit your organisation! Ideal for working together on communication, prioritization, teamwork, overview, and memory. This escape room can also be rented.

Of course, FireWare can also develop other challenging simulations and games adapted to your specific learning and teaching goals! Please contact us for more information.



EEN SLACHTOFFER  
METAALSPLINT  
GEKREGEN. WE  
ONDERSTAANDE  
BEDRIJFSHULP  
HANDELT OP D

1. LAAT HET OOC  
EEN HAND EN  
SLACHTOFFER  
EISENDE HULP

2. HAAL DE MET



## *Didactic escape room at Intertraining*

FireWare and Intertraining collaborated in developing the first escape room for company emergency teams. There are 4 fully interactive rooms in which the participants are confronted with questions and riddles about fire, life-saving measures, communication and evacuation. Their experience is the principal focus of the escape room. We can promise you this: it will certainly not be boring or easy! The participant searches the room looking for answers and clues and tries to crack the code in order to escape. This escape room helps Intertraining to add a whole new dimension to the education of company emergency teams in the Netherlands.

For this appliance, FireWare developed a dedicated escape room controller. This is the installation's heart and ensures the full operation and monitoring of the 4 connected rooms. The instructor can control the entire installation with an iPad. Each room is provided with cameras that show the participants' actions. Are they struggling with a problem? Does it take too long to find an answer? The instructor can help them by showing tips on the monitors in the rooms.

The experience is created by means of specials effects, light and sound effects and projection. The installation has two options: an educational option, where the focus is on the educational aspect and an escape option that focuses on the recreational purpose of the installation, like team building sessions.

By solving puzzles, the building can be safely evacuated. Once everyone is safe, the participant can escape from the experience!







## *Didactic Escape Room “Rescue Anne”*

The spirit of murder nurse Anne has been wandering for over a century through the 3 identical escape rooms at OABV bv in The Hague. As a result of her actions, 4 patients died. Do the students succeed in making the right decisions to escape on time?

Participants are divided into 3 groups. Each group is locked in one of the three identical escape rooms. Who is the first to escape? All topics of Health & Safety Training course are covered. Life-saving action, fire, evacuation and communication.

The commands vary from simple right or wrong questions to, for example, applying a dressing. A picture is taken of this and the instructor evaluates it remotely. If all is well, the group receives a part of the code. An incorrect entry costs penalty time.

There are 24 lockers per room with various -interactive- objects. For example, there are books and instruction materials that students can “buy” at valuable time. Light and sound effects complete the experience. All this, of course, in the style of Anne, the murderous nurse from 1890...







## *Didactic Escape room OTC Someren: “Hotel Crashed”*

It was the year 1934. A bellboy from “Hotel Crashed” was enraged about being fired and returned for revenge. He sabotaged the elevators and trashed hotel rooms. Then, the bellboy mysteriously disappeared leaving his successor in shock. The players will now have to restore the order.

The Emergency Response escape room installed at OTC Someren consists of 4 unique rooms and a lobby. In the hotel lobby the players will receive game instructions from the succesor. After the instruction the door opens, and the game begins. The enraged bellboy asks questions via projected videos. The players must collect clues to crack the codes and to escape!

The escape room can be easily controlled with a tablet. Every single room represents a separate escape room, so it is possible to send in four different groups of players each into their own escape room.







## *Interactive roadshows*

FireWare is experienced in developing various forms of interactive roadshows. We transform vehicles, containers and trailer wagons into informative means, we create pop-up stores and serious games for informational purposes. This applies for instance to projects within the scope of Fire Safety Awareness or means to reach out to (fire brigade) volunteers.

All our creations prioritize ease of use, whilst combining short set-up times and a solid presentation. But there is more! Our technology allows us to collect data about the visitor's level of expertise. These data are used by fire brigades to finetune their information to the public's needs.

Finding a way to reach the intended target groups is crucial in introducing an effective safety message. We make sure that visitors absorb valuable information while enjoying the experience. This method helps us to reach our ultimate goals: fewer fires, less damage and as little victims as possible!

Do you have an idea for an interactive way to introduce a message? Or do you need help creating one? Contact us and together, we will find your best solution.





# de Kameleon Race

114





## The Kameleon Race

The days that a fire brigade would get on a soapbox with a stack of leaflets to provide information are over. That's why FireWare, in collaboration with the Fryslân Safety Region, realised a completely new information concept: the Kameleon Race! The Kameleon Race is an educational game regarding themes in the Fire Safety Life project. The Fire Safety Life Experience of the Fryslân Safety Region provides information in a fun and interactive way.

The Kameleon is a popular Dutch children's book series written by Hotze de Roos. The twins Hielke and Sietse Klinkhamer have all kinds of adventures in their boat "the Kameleon". The father of Hielke and Sietse is besides blacksmith also commander of the fire brigade. Needless to say, all adventures take place in Fryslân.

The Kameleon Race is based on the book "De Kameleon in het zoeklicht" (the Kameleon in the searchlight). In this book there is a fire in a farm. To extinguish the fire, the water tender is driven on a scow and pushed to the site of the incident by the Kameleon.

Visitors are challenged to answer questions about the themes in the Fire Safety Life project. Think of questions concerning fires in the kitchen, smoke detectors, CO, chimney fires and having an evacuation plan. With every good answer, the Kameleon goes two steps forward, with a wrong answer the boat will only go one step forward. The challenge is to arrive first at the seat of fire with "your" Kameleon to start extinguishing the fire!

The installation is built in an "old" COPI hook arm container. This container has been adjusted with a large hatch in the side, giving the visitors a good view of the Kameleon Race. At the rear of the container, there is room for items of the fire-technical research team. Obviously sufficient storage has also been taken into

account. Everything that is needed for a successful information event can be found in this one hook arm container! And the concept is also future proof: the decor can be easily adjusted to another theme.

The Kameleon Race is a collaboration between the Fryslân Safety Region and FireWare. Most of the work is carried out by people from the 24-hour service of the region. FireWare supports the process with specialist knowledge and components. All mechanical components and electronics are extremely robust. This way, the region can enjoy the installation for many years.

Unique about this installation is that it actively measures the answers given by the visitors. For each topic and question, the percentage of visitors who had this question correct or incorrect is checked. By means of a special logarithm "incorrect" answers are filtered, so that a reliable picture is created about the knowledge of the visitors. A report is automatically drawn up every day and sent by email to the safety region. This makes it possible to plan much more focused actions on the right topics in the future.









## *“Van Vlam” vehicle East Flemish Brabant rescue zone*

At FireWare, we transform vehicles, containers and trailer wagons into informative tools. “Van Vlam” is a roadshow integrated in a vehicle used to inform people of the risks of fire and to provide tips and tricks in fire prevention. Additionally, it collects valuable data so that more effective and more targeted information can be provided in the future.

“Van Vlam” is an interactive game that shows visitors various statements within the scope of Fire Safety Awareness. Up to 4 players are put behind the buttons. Their aim is to have their character to run away as quickly as possible from a burning house to a safe gathering place. The players answer questions and if the answer is correct, his or her character will run faster. The one who first hits the safe gathering place wins the game.

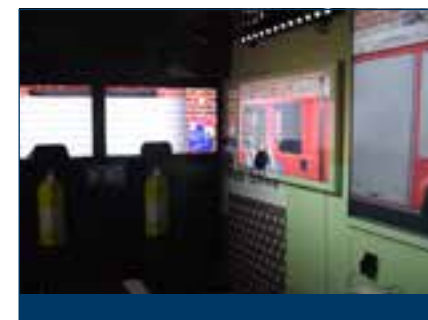
It is enormously valuable that an information vehicle or road show can - in addition to providing information - also collect data about the visitors' knowledge. This makes it possible to provide even more effective information. Information that ultimately results in fewer fires, fewer casualties and less damage.

Every show is different. The questions are pulled from a database. Which questions will be answered correctly? Which of them are too difficult? Do people score high or low on the subject as a whole or as a part? This kind of information provides a lot of insight and helps provide more targeted information!









## *Fire Safety Awareness Drenthe: riding in the back of a fire truck*

BVL, or fire-safe life, is a project within the Netherlands' Fire Service to inform the general public on how to prevent fires, damage and casualties. The safety region of Drenthe now has a very unique fire truck themed information container!

Visitors ride along in the back of a fire truck. They pass several fires and incidents along the way, providing insight into the causes of fire. But there are also a large number of tips on how to prevent fires: an installation that encourages you to think.

The fire truck is made up of an old hook-arm container. Instead of disposal, a choice was made for sustainable reuse. The Drenthe Safety Region and FireWare worked together intensively to make it all happen. For example, the 24-hour service of the safety region took care of the entire structure. An impressive piece of work!

The installation consists of 8 screens that are placed in an interactive setting around the visitors. The information show is played on these screens. Supported by light, smoke and sound effects, visitors will have a complete experience. Outside you will find an extra screen, which shows visitors waiting in line when the next show starts.

Everything for a good road show can be found in this BVL container. There is plenty of storage space for leaflets, inflatable mascots, water and all the other things that are needed during an information meeting. There is even an electrically extendable sunshade that ensures that participants are sheltered from the sun, and the rain. The entire installation is operational within 10 minutes. The information container is also "Vandal-proof" as we say in firefighting!

The installation has 6 seats. The rear 2 places can be removed so there is more room for a visitor in a wheelchair. There is a separate entrance and exit, allowing a smooth show and a decent separation of the incoming and outgoing audience.

Graffiti has transformed the outside of the container into an actual water tender fire truck. The installation has a high attraction value for a broad target group and is designed in such a way that the content and decor of the show can be easily adjusted. This has resulted in a future-proof, widely deployable, information solution!





## *Simulations & staging*

It isn't uncommon for organisations to lack time, know-how or materials to create a specific scenario or simulation. That is why FireWare offers customised solutions that can be both rented and purchased.

FireWare disposes of the largest specialist rental fleet of practice materials in Europe, and our experienced team of simulation specialists is always ready to take on virtually every simulation challenge. From wildfires to tunnel exercises, from domestic fires to floods; FireWare takes care of all your simulations, nationwide and beyond.

FireWare has the techniques, means, skills and know-how to simulate these kinds of scenarios and presents the participants time and again with interesting challenges in a realistic setting. Are you interested in a certain simulation solution or scenario? Contact us and together, we will create your best solution.







## *FloodEX: Staging of a worst credible flood scenario in the North Sea area*

FloodEX is the biggest disaster exercise ever held in the Netherlands. A scenario of the top of the North Holland province being hit by a major flood was simulated during the international exercise. The scenario describes a storm surge at the North Sea. The area is hit by a strong depression with extreme wind speeds and this arrives along with the tide. This combination of natural events has led to extreme high water levels. FireWare was commissioned to implement a variety of scenarios. Staging tools such as smoke generators, powerful fire extinguisher trainers, training dummies, and audio support were deployed from the FireWare rental fleet. In addition, FireWare has developed a range of products specifically for this staging.

Fictional villages were drawn on the maps of the North Holland province. Hundreds of people were stuck for two days after a storm surge: in cars, on roofs or on small pieces of land. Some were seriously wounded, confused, aggressive or even deceased. Both the domestic and international collective emergency services were challenged with coming to everyone's aid.

The emergency services faced extraordinary scenarios. For example, a group of sect members have entrenched themselves on a small island in the Alkmaardermeer. Here they are quietly waiting for the end of time. Until a heavily pregnant woman seeks medical assistance. The remaining sect members don't agree and try to stop the arrival of the emergency services. The MU is deployed. There is some pretty fierce defence. People are entrenching themselves behind barricades around the camp and are throwing apples at the aid providers.

A sludge spill occurred as a result of the flood and various different barrels with hazardous substances broke adrift. This scenario was realised in an environmentally friendly manner. A great many people were desperately trying to escape from the water. FireWare organised many cars, loaded up with a total of 22 cubic meters of household goods. Some were overtaken by the water and couldn't get away in time. FloodEX was a very impressive experience and FireWare greatly enjoyed to be part of it. Our team has learned a lot on realistic staging at this event, as we were able to observe the reactions of the people involved. These experiences applied to many following scenarios!







## *Multidisciplinary trainings in tunnels*

Closing a tunnel for traffic to allow first responders to practise their skills is not an easy task. Such tunnel trainings need to be thoroughly prepared, limiting the inconvenience for the public. By keeping the staging time as limited as possible, the actual training time increases. FireWare rents out sets especially composed to simulate realistic fires in a tunnel. These sets consists of smoke generators to create thick pillars of smoke (because of tunnel ventilation, multiple smoke generators are required), equipment for realistic flame simulation and, very important, there will be no damage whatsoever to the tunnel. And all of this in just a mere 15 minutes of staging time.

Rijkswaterstaat, the Dutch organisation responsible for infrastructure and water management hired FireWare to help stage the largest tunnel exercise in the history of the Leidsche Rijntunnel. Two casualties, a number of seriously injured victims, and a massive chaos combined into a truly spectacular scenario.

The technical service had prepared smoke generators that created a realistic smoke layer by using vertical smoke injection. The smoke generators produced an continuous smoke output up to 60,000m<sup>3</sup> per minute. The amount of smoke could be meticulously adjusted to the intervention stage at hand. In addition, extinguisher trainers and fire manikins were used to stage cars on fire with their occupants still in them.

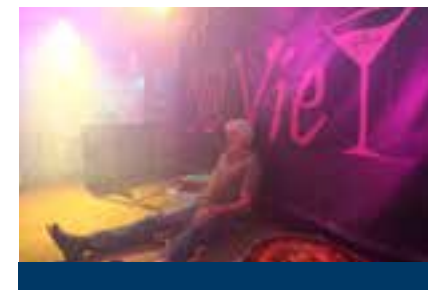
The results of the tunnel training evaluation will be used to finetune and optimise disaster action plans and procedures if necessary.











## Terrorism scenarios

Staging a scenario in the field of ‘the fight against terrorism’ requires a very specific approach. These scenarios often involve several disciplines, thorough consideration of situational imaging in order to avoid discussions during the evaluation, and unambiguous presentation of specific dilemmas. FireWare has developed a special operating system allowing the instructor to manipulate the incident settings directly from his smartphone or tablet.

For example, a temporary “fight against terrorism lab” was built at the ExpoRIC at Twente airport, staging a shooting in a catering facility in Enschede. The projection, fire, sound and light effects are controlled by the FireWare special TGB control. The instructor logs on with his or her phone, and all functions are within reach. Every dilemma can now be highlighted, combined with realistic staging using FireWare simulation products.

The lab of the Amsterdam Amstelland safety region was also set up by FireWare. A practice environment where you can practice safely without “voyeurs”. A disco facility was built in this space where various incidents can be simulated. Think of a stabbing, a shooting and other forms of attacks. The firefighters in training wait in the cloakroom. The monitors of the security cameras show the entry of the arrest team. The participants can then act in a realistic setting.







## *Large-scale fires*

Fire practices involving large-scale fires considerably differ from small-scale fire trainings. For example, think of ordering a large-scale water supply system or perhaps the situation requires a company or platoon deployment. FireWare disposes of the equipment, knowledge and experience for staging realistic large-scaled fires in almost every location and for creating challenges for all participants.

A good example of this is the simulated fire at FireWare. FireWare moved into its new premises at de Stek in Wieringerwerf in 2013. We managed to stage a beautiful blaze in the building during the renovation activities in 2012. A fantastic opportunity for the Hollands Kroon fire service to become acquainted with the new company in their region!

A combination of silk flames and firelight spots on the inside and gas extinguishing trainers on the roof certainly resulted in some impressive looking flames. The flames could be seen far and wide, along with a significant amount of smoke.









## Aviation

Safety is a hot item within aviation. FireWare is highly experienced in creating dedicated simulation possibilities for this particular field of expertise, from cabin crew to test pilot. For example, we have implemented fires of lithium ion- batteries, hidden fires and situations with aggressive passengers. To create these settings, we use fixed training situations or even mobile sets that can be applied inside an operational aircraft.

Schiphol fire department came to FireWare at the end on 2015. They desired to get all facets of an airport incorporated in a training exercise hall of about 10 x 15 meters. After intensive designing, the first modular training centre became reality! Offering challenging training exercises for the fire department and first responders, every day again in an always changing training environment. By using multiple cubes that can be connected to each other like a Lego-box, practically every facet of the airport can be replicated. Including the accompanying dilemma's.

Object saturation is a big risk when building a training centre. How do you make sure a centre is furnished in such a way that there's a challenge for every participant, on every level, year after year? At Schiphol fire department this has been solved by using modular structures. By arranging the cubes differently each time, a different base construction is created. Multiple different types of floors, ceilings, walls and doors can be placed inside the modules. Even stairwells, simulated elevators and even a simulated escalator are building blocks within this modular concept. Different floor- and ceiling elements can be used too. For example, a fire can be simulated in a lowered ceiling. Or under a raised floor.

The training centre is used by both fire department and first responders on Schiphol. For both target audiences there's more than enough challenge. Exchanging walls and doors can be done in a few minutes. In half a day bigger transformations can be made: from departures to luggage cellar, from technical area to hotel. The possibilities are endless!





CREATING REALISTIC TRAINING ENVIRONMENTS

[www.FireWare.nl/en](http://www.FireWare.nl/en)  
[info@FireWare.nl](mailto:info@FireWare.nl)  
Phone: +31 (0)88 252 60 00

De Stek 5  
1771 SP Wieringerwerf  
The Netherlands

- *Sales & Rental off Education Products*
- *Simulator Design*
- *Interactive Roadshows*
- *Training Escape Rooms & Serious Game*



# *Creating Realistic Training Environments*