

tru corp

www.trucorp.com®



truultra®

trumonitor®

truvent®

T: +44 (0) 28 3888 2714
E: info@trucorp.com



Why TruCorp?

Since 2002, TruCorp have been committed to improving medical best practice through the development of anatomically correct training products. TruCorp have designed, engineered and produced a wide variety of training manikins for airway management, trauma training, ultrasound, paediatric procedural skills and patient monitoring software.

What makes the 'AirSim X' airway so unique?

- ⦿ The airway has been designed using CT DICOM data taken from a human patient, the result is an anatomically correct and visually accurate airway.
- ⦿ The AirSim X airway is very durable, it has been certified to practice 20,000+ intubations cycles, which on average lasts 4-5 years. The durability of our products is one of the reasons we have so many returning customers.
- ⦿ We are so confident in the quality and durability of our models, we offer a 5-year airway guarantee on all X range models.

But don't take our word for it... This is what our customers have to say about us and our product range...

"I wanted to restate that in my 42 years of practicing Respiratory Therapy, I have never seen a more complete line of airway manikins and training resources related to the most important work there is to do – save lives by learning advanced airway placement."

John Murphy, Franciscan St Francis Health

"Having seen over 300 providers so far, there is no difference in the product new and a year later...we have had nothing but great feedback from all of our students and clinicians about TruCorp products."

Christopher Graham, Albuquerque Ambulance

"The team at TruCorp have been fantastic to deal with, providing an excellent product while working within tight timelines."

Brent Thorkelson, Emergency Medical Services

"The TruMonitor app is a great simulation monitor to practice emergency scenarios...the best communication from the service team."

D. Hinterreiter, University of Pécs



truvent

A high-fidelity simulation platform that allows users to create complex clinical scenarios on a simulated ventilated patient

App Features & Benefits

- Teach core principles of mechanical ventilation through simulation of normal ventilation and a range of disease states.
- Student can take control of ventilator settings to achieve ventilation targets during simulation. As student adjusts ventilation parameters/strategy, respiratory engine adjusts accordingly.
- Instructor can choose & activate an anaesthesia complication which automatically adjusts relevant physiological & ventilation parameters (tension pneumothorax, anaphylaxis, bronchospasm, endotracheal tube disconnect, pulmonary embolism, malignant hyperpyrexia, local anaesthesia toxicity, cardiac arrest and many more...)
- "Build a Breath" feature allows student to create bespoke ventilation strategies, enhancing teaching of mechanical ventilation principles.



Medical Simulation Training

- Lung volume (calculated from height, gender, age)
- Dynamic lung compliance curves ranging from normal lungs to mild/moderate/severe disease states (ARDS/asthma/fibrotic etc)
- Inspiratory & expiratory resistance to airflow
- Intrinsic patient respiratory effort (rate, effort, I:E ratio, forced exhalation or paralysed)
- Triggering (adjustable flow & pressure sensitivity), limit, cycling, PEEP variables
- Variable flow patterns
- Appropriate & adjustable ventilator monitoring/alarms
- Monitoring of inhaled & end tidal gas composition
- Calculation of minimum alveolar concentration from combined gas composition analysis to monitor depth of anaesthesia
- Easily adjustable physiological parameters, e.g. simulate hypoxia with hypoventilation or hypotension with high airway pressures

trumonitor[®]

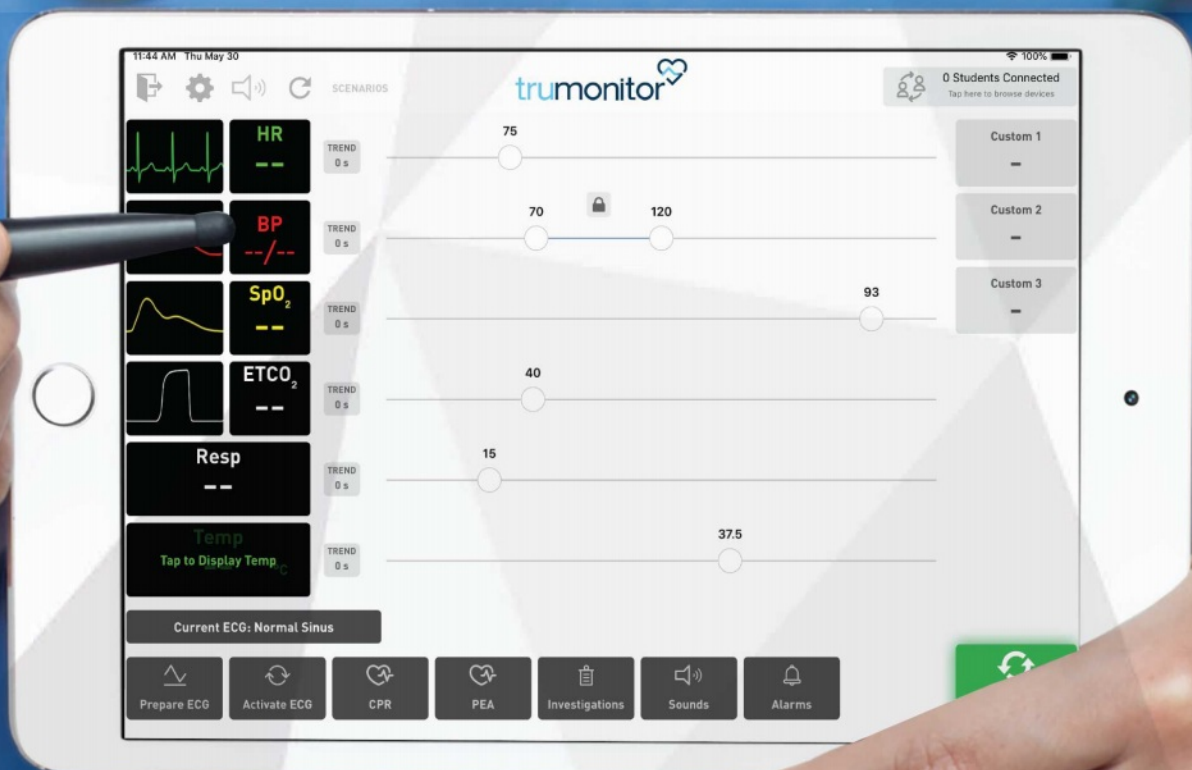
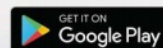
AN ADJUSTABLE PATIENT MONITORING SOLUTION,
FOR EFFECTIVE MEDICAL SIMULATION TRAINING

♥ EASY TO SET-UP

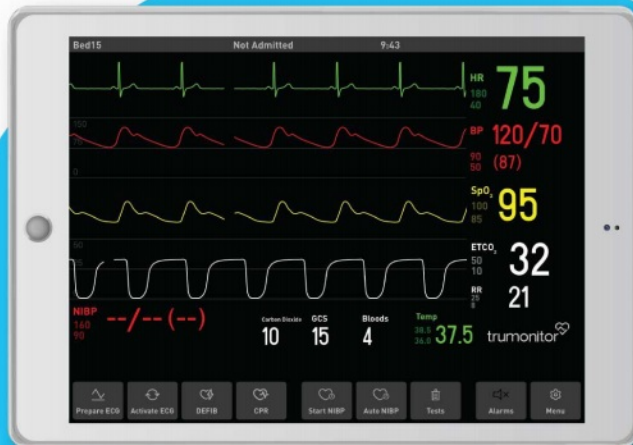
♥ EASY TO ACCESS

♥ EASY TO USE

Access your free trial here

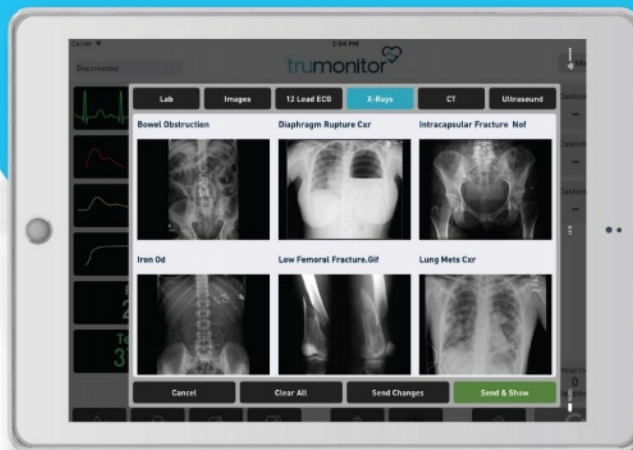


visit www.trucorp.com for full product range



App Features and Benefits:

- Adjustable vital signs with 40 + ECGs, capnography, etCO2 and SpO2 Trace waveforms. Trend feature allows the instructor to focus on the student
- Scenario builder with pre-loaded scenarios
- Real-time CPR feedback
- Defibrillation and Pacing capability
- Cardiac arrest options
- Arterial line and blood pressure cuff inflation cycle
- Investigation suite with access to lab and blood results, ECG/X-ray/CT images
- Users can access camera roll to upload clinical images
- Sound effect library with airway obstruction, secretions, stridor, laryngo spasm etc.
- Various monitor modes with color and layout personalization



TruMonitor Bag

- Blood pressure cuff for both Adult and Paediatric patients
- CO2 sensor for attachment onto Bag mask
- SpO2 finger probe
- Adult 3 lead ECG + Electrodes
- Adult AED Defibrillation Pad



AIRSIM BRONCHI

The AirSim Bronchi features internal anatomically correct detail down to the fourth generation bronchi, combined with the AirSim Airway and Nasal Passage.

The model provides exceptional detail in both internal and external features; the carina, the bronchus and bronchioles can be clearly identified through the use of a fibre optic laryngoscope.

This model is ideal for a range of training including;

- Direct and video laryngoscopy
- Endo and naso tracheal tube insertion
- Fibre optic examination
- Supraglottic device insertion
- Diagnostic bronchoscopy
- Lung isolation and suctioning techniques
- Bronchial blocker insertion and specialised stents

AIRSIM

The AirSim features the AirSim airway and Nasal Passage, providing realism and functionality to offer the user tactile feedback.

This model is ideal for a range of training including;

- Direct and video laryngoscopy
- Endo and naso tracheal tube insertion
- Fibre optic examination
- Supraglottic device insertion





The **TruMan Trauma X** provides a cost effective and time efficient solution for trauma education. The 'real feel' high quality silicone material used is both durable and realistic providing a life like training experience.



Airway Management:

- AirSim X airway
- Facilitates full range of airway management training techniques



Cricothyroidotomy and Tracheostomy:

- Anatomically accurate simulated cricoid, laryngeal cartilages and palpable tracheal rings.



CPR:

- Realistic rib structure for easy identification of the xiphoid process, sternum and sternal notch



Needle Decompression:

- Introduce air to create tension pneumothorax at the second intercostal space
- Palpable torso
- Audible hiss upon correct insertion



Chest Drain and Needle Decompression:

- Bilateral pneumothorax at the fifth intercostal space and bilateral haemothorax incisions at the sixth and seventh intercostal spaces.

AIRSIM ADVANCE X

The AirSim Advance X features the AirSim X Airway and Nasal Passage providing a realistic manikin to educate and improve competency among clinical specialists in a range of airway management skills.

This model is ideal for a range of training including;

- Direct and video laryngoscopy
- Endo and naso tracheal tube insertion
- Supraglottic device insertion
- Bag mask ventilation



AIRSIM COMBO X

The AirSim Combo X features the AirSim X Airway, Nasal Passage, an anatomically accurate simulated cricoid, laryngeal cartilages and palpable tracheal rings.

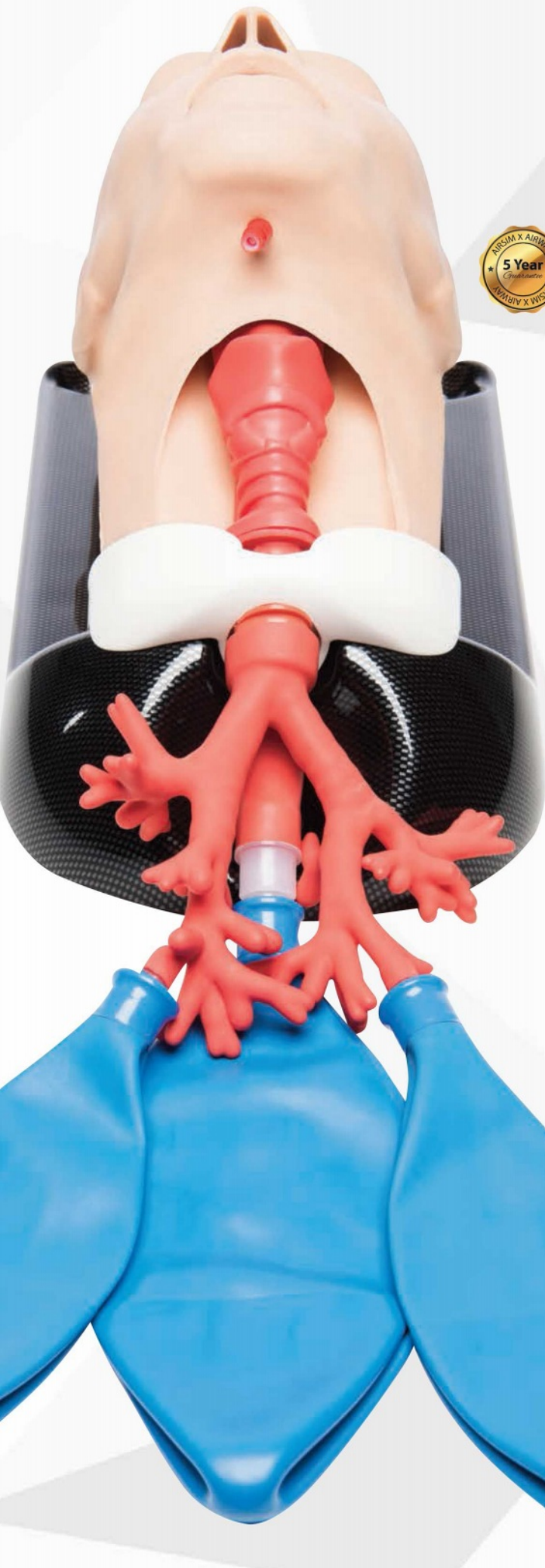
This model is ideal for a range of training including;

- Needle and surgical cricothyroidotomy
- Percutaneous tracheostomy
- Direct and video laryngoscopy
- Endo and naso tracheal tube insertion
- Supraglottic device insertion
- Bag mask ventilation

Features;

- Realistic head articulation which allows intubation in both neutral and sniffing position
- 'Real feel' high quality silicone skin
- Wrap around neck skin which can facilitate twenty plus incisions
- Larynx membrane insert which provides a life-like resistance for the cricothyroid membrane and tracheal rings
- Optional subcutaneous fat and blood tissue demonstrates more difficult tracheostomy and cricothyroidotomy procedures





AIRSIM COMBO BRONCHI X

The AirSim Combo Bronchi X is the 'all-in-one' trainer for your airway management training needs. The model provides a complete solution without the need to purchase separate task trainers.

The model features the AirSim X Airway, Nasal passage, an anatomically accurate simulated cricoid, laryngeal cartilages and palpable tracheal rings with the addition of a bronchi which gives anatomical details down to the fourth generation.

This model is ideal for a range of training including;

- Needle and surgical cricothyroidotomy
- Percutaneous tracheostomy
- Fibre optic bronchoscopy techniques
- Lung isolation techniques
- Lung suctioning
- Diagnostic bronchoscopy
- Direct and video laryngoscopy
- Endo and naso tracheal tube insertion
- Supraglottic device insertion
- Bag mask ventilation

Features;

- Realistic head articulation which allows intubation in both neutral and sniffing position
- 'Real feel' high quality silicone skin
- Wrap around neck skin which can facilitate twenty plus incisions
- Larynx membrane insert which provides a life-like resistance for the cricothyroid membrane and tracheal rings
- Optional subcutaneous fat and blood tissue demonstrates more difficult tracheostomy and cricothyroidotomy procedures

AIRSIM CHILD BRONCHI X



The AirSim Child Bronchi X, based on a 6 year old, features the AirSim paediatric airway, nasal passage and internal anatomical detail down to the 4th generation bronchi facilitating full airway management and bronchoscopy techniques.

This model is ideal for a range of training including;

- Direct and video laryngoscopy
- Endo and naso tracheal tube insertion
- Supraglottic device insertion
- Bag mask ventilation
- Fibre optic bronchoscopy techniques
- Lung isolation techniques
- Lung suctioning
- Diagnostic bronchoscopy



AIRSIM CHILD COMBO BRONCHI X

The AirSim Child Combo Bronchi X is the 'all-in-one' manikin for paediatric airway management. It is ideal for practising oral and nasal intubation training techniques, percutaneous tracheostomy, emergency cricothyroidotomy and bronchoscopy techniques on a six year old child.



This model is ideal for a range of training including:

- Needle and surgical cricothyroidotomy
- Percutaneous tracheostomy
- Practising oral and nasal intubation techniques
- Practising laryngeal mask airway and supraglottic device insertion
- Practising combi tube insertion
- Practising double lumen endotracheal tube insertion
- Practising fibre optic intubation and video laryngoscopy
- Practising bag mask ventilation techniques
- Diagnostic bronchoscopy
- Practising lung isolation techniques using left and right endobronchial tubes and bronchial blockers
- Practising lung suctioning techniques

AIRSIM BABY X



The AirSim Baby X is an anatomically correct representation of a 6 month old baby.

This model can be used to educate and improve competency among paediatric clinical specialists in a range of airway management skills.

This model is ideal for a range of training including;

- Direct and video laryngoscopy
- Endo and naso tracheal tube insertion
- Supraglottic device insertion
- Bag mask ventilation



AIRSIM PIERRE ROBIN X

The AirSim Pierre Robin X has been developed in collaboration with the Children's Hospital Los Angeles to highlight difficult airway management techniques on a 6 month old baby with Pierre Robin Sequence.

The anatomically correct airway allows the trainee to identify congenital defects including significant mandibular hypoplasia, glossoptosis, cleft palate and bifid uvula.

This model is ideal for a range of training including;

- Direct and video laryngoscopy
- Endo and naso tracheal tube insertion
- Supraglottic device insertion
- Bag mask ventilation



"We are loyal to the AirSim manikins because they are the most realistic models on the market... The manikins are well suited to our training, the incredible realism and anatomically correct details provide our pediatric anesthesiology and critical care learners an experience similar to a real clinical scenario... The product range is ever expanding and TruCorp continue to produce airway trainers that reflect the real world challenges we face."

Patrick Ross, Los Angeles Children's Hospital

tru
corp

A complete solution for paediatric clinical skills training

TruBaby X is incredibly lifelike with the appearance, weight, size and movement of a 5-month-old infant.



CPR

- Realistic rib structure with xiphoid process and sternum.
- Full recommended depth of 1.5 inches can be achieved with full chest re-coil.

Airway management

- Realistic and durable AirSim X Airway.
- Facilitates full range of airway management training techniques.
- Realistic movement including head tilt, chin lift and jaw thrust.



Peripheral venous cannulation (Hand and Arm)

- Contains the dorsal venous arch, cephalic and basilic veins allowing needle cannulation at various locations.
- Manual activation of venous blood flow allows fluids to be withdrawn and administered providing realistic blood flashback.

Peripheral venous cannulation (Foot)

- Contains the dorsal venous arch, great and lesser saphenous veins allowing needle cannulation at various locations.
- Manual activation of venous blood flow allows fluids to be withdrawn and administered providing realistic blood flashback.





Lumbar puncture

- Ability to manoeuvre the baby into either the required lateral decubitus or upright position.
- Palpable vertebrae landmarks including the iliac crest.
- Lumbar puncture can be practised at L3-L4 and L4-L5 spine locations.
- Accurate needle placement allows for positive response and collection of simulated cerebrospinal fluid (CSF).

PICC line insertion

- Facilitates PICC line procedure including guidewire insertion, dilation, and full cannulation.
- Peripherally inserted catheterization either through the basilic, brachial or cephalic veins.
- Manual activation of venous blood flow allows fluids to be withdrawn and administered providing realistic blood flashback.

Ultrasound guided PICC line insertion

- Optional arm facilitates ultrasound guided IV and PICC line insertion.
- Realistic anatomy illustrating two visible embedded vessels.
- Real feel vascular 'tenting' upon entry into the vessel.

Intraosseous (IO) infusion (tibia)

- Features the tibial tuberosity and patella anatomy which facilitates the identification of the proximal tibia intraosseous needle insertion site.
- Realistic resistance when penetrating the medullary cavity.



Needle thoracentesis for tension pneumothorax (2nd & 5th intercostal space)

- Realistic rib structures including xiphoid process and clavicle.
- Palpable landmarks in the 2nd intercostal space mid clavicular line and the 5th intercostal space mid auxiliary line.
- Audible hiss when needle is successfully inserted.

Chest drain (air only)

- Palpable landmarks in the 5th intercostal space mid auxiliary line.
- Facilitates either the Seldinger chest drain insertion technique or the needle thoracentesis approach for the treatment of a pneumothorax.

Urethral catheterization

- Realistic anatomy to practice and learn the techniques of catheterization.
- Upon successful entry fluid will flow from the catheter.
- Option for interchangeable male and female genitalia.

truultra



TruPICC

is an anatomical adult male arm which has been designed for users to practice the skills associated with ultrasound guided PICC line and Intravenous (IV) techniques. This IV and PICC training model develops the user's skills associated with needle placement, guidewires and catheters. The upper arm anatomy features the brachial vein, basilic vein, cephalic, median cubital vein, superior vena cava and the brachial artery for vessel differentiation.

Features:

IV

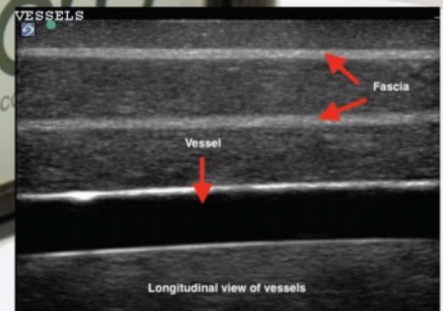
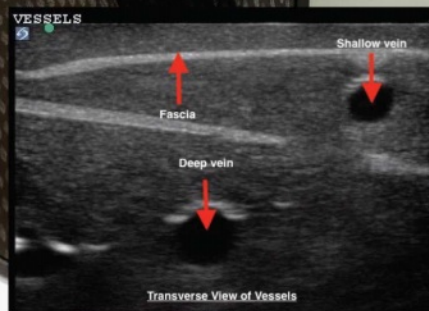
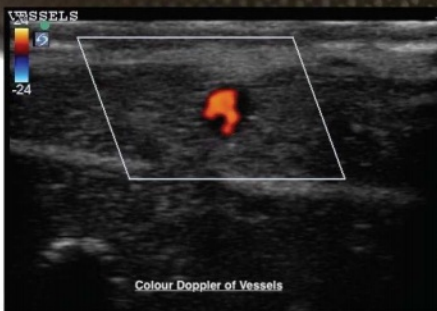
- Realistic visualisation of the median cubital, brachial and basilic veins
- Differentiation between the basilic vein and the basilic artery
- Realistic blood flashback upon entry into the vessels
- Real feel vascular 'tenting' upon entry into the vessel

PICC

- Full catheter PICC line placement and Seldinger techniques can be practiced with a recommended 4F catheter
- Features vascular anatomy of an entire arm including the brachial artery, brachial, cephalic basilic and median cubital veins
- Ability to use ultrasound on the upper chest which contains the superior vena cava designed to allow users to verify correct catheter placement
- Option to switch on/off flow to either the cephalic or basilic veins to prolong the life of the insert
- Fluid can be injected into the model to verify needle tip location. When vessels are accessed fluids can be withdrawn and administered providing realistic blood flashback

TruNerveBlock

is a 3-in-1 model for trainee anaesthetists to develop, practice and maintain the skills necessary to use ultrasound for guiding regional anaesthesia and vascular access procedures. The model features a fractured bone structure, embedded vessels which allows effective practise of routine IV cannulation and additional nerve bundles for regional anaesthesia.



Features:

- Contains epidermal layer, two simulated vessels (4mm), a nerve bundle (with surrounding artery and vein), a fractured bone & fascia layers
- Nerve bundle allows fluid entry & withdrawal for anaesthesia fluid administration
- Positive fluid flow when vessels are accurately accessed
- Constant blood flow for realistic flashback
- Colour Doppler flow imaging
- 1000+ needle incisions with self-healing/regeneration of the TruUltra material
- Needle tracks disappear with very minimal damage to material
- Longitudinal and transverse anatomical viewing options
- Realistic needle tip identification and artefact



tru
corp
www.trucorp.com®

TruCorp Ltd
33 Waringstown Road
Lurgan, Co. Armagh
BT667HH
N.Ireland

T: +44 (0) 28 3888 2714
E: info@trucorp.com